



President's Message

By Jason Xu, PE, PTOE, PMP, Iteris

As we move into fall, ITE SoCal continues to build momentum with another quarter full of collaboration, learning, and connection.

We kicked off the quarter in July with our Mid-Year Board Meeting and Committee Chairs Mixer, where section leaders came together to celebrate accomplishments, share updates, and align priorities for the remainder of the year. It was inspiring to see the continued dedication of our committee chairs and volunteers—each playing a vital role in advancing our mission and strengthening our community.

In August, we gathered for our Summer Mixer at Ballast Point in Long Beach. With beautiful harbor views, great food, and lively conversations, it was an evening to remember. These mixers remind us that our professional network is also a community—one that grows stronger with every shared experience. A big thank-you to Vanessa Wong and the Events Committee for putting together another fantastic event.

September highlighted our ongoing Equity Series, featuring two exceptional sessions. Kimberly A. Turner, Principal Consultant and Owner of Turner Consulting Services LLC, led *"Finding Equity Grant Opportunities in Uncertain Times,"* sharing practical strategies for identifying and securing funding that supports equitable outcomes. Candace Cable, a nine-time Paralympian, three-time Olympian, and U.S. Olympic & Paralympic Committee Hall of Famer, followed with a powerful discussion on *"Disability Cultural Competency."* Her insights challenged us to think more deeply about inclusivity and accessibility in transportation planning and design.

As we head into the final stretch of 2025, there's plenty to look forward to. Join us on October 25 for the Student Traffic Bowl, where our student chapters will showcase their knowledge and enthusiasm for transportation. In November, we'll hold our Section Business Meeting on the 12th, followed by our Holiday Mixer on December 11 at the Anaheim Marriott Suites — the perfect occasion to celebrate the season, catch up with friends, and reflect on another successful year.

No matter how you choose to participate, thank you for being part of what makes ITE SoCal thrive — our people, our passion, and our purpose.

Regards,

Jason Xu
 ITE SoCal President

Inside This Issue

2026 Newsletter Schedule	2
Branding Update	2
Social Media Discussion Questions	2
May 2025 Joint Meeting	2
2025 Western District Annual Meeting	3
August 2025 Summer Mixer	4
September 2025 Virtual Meeting	5
October 2025 Joint Meeting with OCTEC	6
October 2025 Student Traffic Bowl	6
ITE International Update	7
ITE Western District Update	7
Hot Transportation Topics from the Southern California Association of Governments	7

2026 Newsletter Schedule

The Quarterly Newsletter is an excellent opportunity to expand and showcase your technical knowledge before a large audience of top-notch Transportation Planning & Engineering professions. Currently, the Section has around 700 members and growing. The Section has consistently won the top Outstanding Section award by ITE International, thereby underscoring the value of having articles published in the Newsletter. To submit articles or to offer suggestions on article topics of interest, please email Jason Xu at jxu@iteris.com, Angelo Pastelin at angelo.pastelin@kimley-horn.com, or Vivian Chong at vivian.chong@kimley-horn.com. Please be sure to provide your content by the content deadline, as it is very much appreciated, and it makes the work of the Section Board and Chairs a lot easier. Here is the projected Newsletter schedule for Calendar Year 2026:

Quarter	Content Deadline	Approximate Publication Date
Winter	Friday, January 16	Friday, January 23
Spring	Friday, April 17	Friday, April 24
Summer	Friday, July 17	Friday, July 24
Fall	Friday, October 16	Friday, October 23

For suggestions on Section activities including webinar topics, please email SoCal Section President Jason Xu at jxu@iteris.com.

Branding Update

By Jason Xu, President, Iteris

We're excited to share an update on our branding efforts within the ITE SoCal Section. As many of you know, ITE International has embarked on a comprehensive brand-evolution initiative to align its identity across all levels, including Districts, Sections and Chapters—with a clear, consistent visual identity and message. [ITE Brand Evolution](#)

In response, our section has refreshed our visual identity: introducing a new logo design, updating our website, and ensuring the consistent use of ITE's approved color palette and logo specifications. These changes strengthen our connection with the global ITE brand, enhance the professionalism and recognition of our communications, and support our goal of being the region's go-to community of transportation

professionals.

By adopting these updated branding standards, we reinforce who we are—both locally and as part of the broader ITE network—and ensure that our messages and materials are cohesive, modern, and aligned with ITE's mission to improve mobility, safety and livable communities. Thank you to everyone involved in helping bring our new look to life — your efforts ensure that our section is visually and strategically ready for the exciting year ahead.

Social Media Discussion Questions

Editor's Note: To make our quarterly Section Newsletters more interactive and foster greater engagement on the Section's [LinkedIn](#) page, we're inviting all Section Members to share their thoughts on the following discussion questions. Your input not only helps shape future programming, but also strengthens our ITE SoCal community. Please email Angelo Pastelin at angelo.pastelin@kimley-horn.com, or Vivian Chong at vivian.chong@kimley-horn.com.

This quarter's discussion questions:

1. What was your favorite event in 2025 and why?
2. Are there any types of ITE events—technical tours, social mixers, student engagement, etc.—you'd like to see in 2026?

We look forward to hearing from you and continuing to grow our ITE SoCal community together!

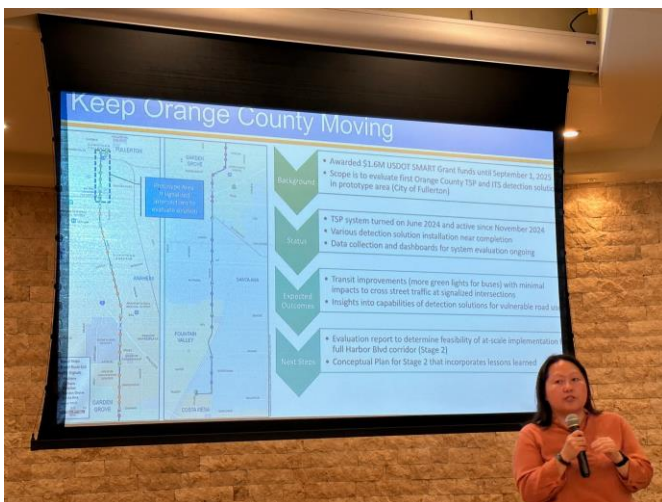
May 2025 Joint Meeting

By Jonathan Delgado, Scribe, MNS

The May 2025 Joint Meeting between ITE SoCal, RSBITE, and ITE San Diego was held on Thursday, May 22nd, at Plaza de Magdalena in San Juan Capistrano. Iteris was the ITE SoCal monthly meeting sponsor, speaking about how their technology is trusted for Smart Mobility Infrastructure Management. After, the president for each ITE section gave a quick presentation

about their chapter and their upcoming events. Finally, Walter Okitsu of KOA (Lochner) talked about the 2025 ITE Western District Annual Meeting in Long Beach and that people should sign up for it soon.

Alicia Yang, Senior Project Manager of Orange County Transportation Authority (OCTA), gave the first presentation titled "Signal Synchronization in Orange County". She talked about Orange County's half cent sales tax, and how it is used for freeway, transit, and street projects. 4% of the half cent sales tax is used for OCTA's Regional Traffic Signal Synchronization Program (Project P), a \$453 million project that aims to synchronize over 750 miles and 2,000 of signalized intersections across Orange County. Project P also includes an annual competitive call for projects through CTFP guidelines, corridor operations performance reports for all coordinated corridors every two years, a traffic forum between all participating agencies twice a year, a Local Signal Synchronization Plan update every three years, a countywide Traffic Signal Synchronization Program (TSSP) Study, and the County's Traffic Signal Synchronization Master Plan.



Alicia Yang, Senior Project Manager, OCTA
 (Photo Credit: Jonathan Delgado)

Monique Reza Arellano, Chief of Council of Governments – San Bernardino Council of Governments/San Bernardino County Transportation Authority (SBCTA), was the next person to give her presentation. Titled "Smart County Master Plan and Signal Synchronization Deployment", she discussed San Bernardino

County's plan and how it would promote clean and sustainable transportation, enhance efficiency and responsiveness, improve quality of life, and support a new narrative focused on innovation and opportunity. She detailed the engagement process, stakeholder feedback including equity/connectivity, transportation, and public safety, and Early Action Plan Proposed Projects. These new projects that the County would like to propose include broadband and last mile connections, Smart Corridor pilot projects, smart intersections that include license plate readers, and computer-aided dispatch or CAD-to-CAD systems.

The final presentation was presented by Suha Natarajan of SANDAG (Senior ITS Planner) and Don Murphy of ARCADIS (U.S. Director of Transit Systems and Operations". Their presentation was called "SR 11/Otay Mesa East Port of Entry", and they discussed the project, a joint venture between SANDAG and Caltrans in collaboration with state and federal partners from the U.S. and Mexico. It will be a new, modern border crossing for the San Diego/Baja California region that will support passenger and commercial vehicle traffic with the design permitting phased expansion to include additional pedestrian, bus, truck, and auto traffic. The project will also incorporate regional border traffic management, ITS, and dynamic pricing based on wait times at the border crossing. The objectives of the project are to enhance customer experience, maximize revenue, minimize border wait times, decrease greenhouse gas emissions, and enhance vehicle efficiency, safety, and security.

The next SoCal ITE meeting will be a joint meeting with ITS-CA on Wednesday, June 18, and will be held at the Almansor Court in Alhambra.

2025 ITE Western District Annual Meeting

By Jonathan Delgado, Scribe, MNS

The 2025 ITE Western District Annual Meeting in Long Beach took place on Sunday, June 29th, to Wednesday, July 2nd, at the Westin Long Beach Hotel. Over 500 people came to this event that attracts people from

across the ITE Western District including from California, Oregon, Washington, Hawaii, and Alaska. Beginning on Sunday, the registration desk opened, and exhibitors were able to go to the exhibit hall to set up their booths. Various vendors attended the event including Western Systems, Miovision, NexTech Systems, Econolite, SWARCO, Advantec Consulting Engineers, Iteris, Etherwan, Kimley-Horn, NoTraffic, Tomar, Q-Free, CTWest, Counts Unlimited, and more. Exhibitors could be found in both the Centennial Hall and in front of it, showing off their products, services, and any recent projects they had worked on. Sunday night ended with a social hour for all to attend.



*ITE Western District Conference Organizers
 (Photo Credit: Jonathan Delgado)*

On Monday, June 30th, the conference kicked off into high gear as the keynote address was held, morning coffee was given out, and the exhibit hall opened for all participants to see. Technical Sessions also took place including the following topics: Speed Management, Active Transportation Quick Build, LAX Ground Transportation, Connected Systems, Freeway Operations, Context Sensitive Solutions, Bikeway Projects, Traffic Management Solutions, LA County Safe Systems, Transit Signal Priority (TSP), Complete Streets, and Artificial Intelligence in Transportation. The kick-off luncheon also took place where they discussed the plans for the LA 2028 Summer Olympics. Speakers in the luncheon were from Metrolink, LA Metro, OCTA, LADOT, City of Long Beach, and the LA 2028 Organizing Committee. After the technical sessions, the Young Professional Happy Hour was held for those attending the event between the ages of 21 and 35. Finally, Family Night was held on the Queen Mary, where participants were able to go on tours, play some games, and eat some delicious dinner.

On Tuesday, July 1st, the conference continued with more technical sessions and a few last hours of the Exhibit Hall for exhibitors to show off their services and equipment. Technical sessions on Tuesday included: Goods Movement, Human-Centered Design, Neighborhood Plans, Data Collection Solutions, Planning for Vision Zero, Integrated Transit Systems, Climate Resiliency, Automating Data Collection for Smart Cities, Safe System Approach, Signal Systems, and Land Use Policy. The Exhibit Hall closed early, and then the Annual Business Luncheon was held. After the technical sessions was the Western District Bowl, an exciting event where teams compete against each other in traffic trivia family-feud style. Finally, at the end of the night was a cocktail hour and then the annual awards banquet where awards were given out to various ITE chapters and members of the ITE Western District.

Wednesday, July 2nd, was the last day of the event where a few more technical sessions were held for attendees. Topics in the technical sessions included: Data Collection and Applications, Tort Liability for Transportation Professionals, VMT and Performance Based Planning, Project Management and Funding, Parking Management, and What's New in the West. After, the final event was held, the Western States Luncheon where participants were able to say goodbye to each other and reminisce over the past few days.

The 2025 ITE Western District Annual Meeting in Long Beach was a great event where attendees were able to discuss new technologies and designs that are developing in the world of traffic and ITS engineering. People from across the region had a great time at the social hours, the lunches, Family Night, the Western District Bowl, and the annual awards banquet. I'm greatly looking forward to next year's ITE Western District Annual Meeting in Bellevue, Washington.

August 2025 Summer Mixer

By Matt Stewart, Secretary, Kimley-Horn

ITE SoCal hosted the Summer Mixer at Ballast Point in Long Beach on Thursday, August 14. Attendees had a great time networking and socializing with colleagues from Los Angeles and Orange counties. Thank you to our sponsor, Counts Unlimited.



*Good Food and Fun Times at the Summer Mixer
 (Photo Credit: Mareeya Tongkul)*

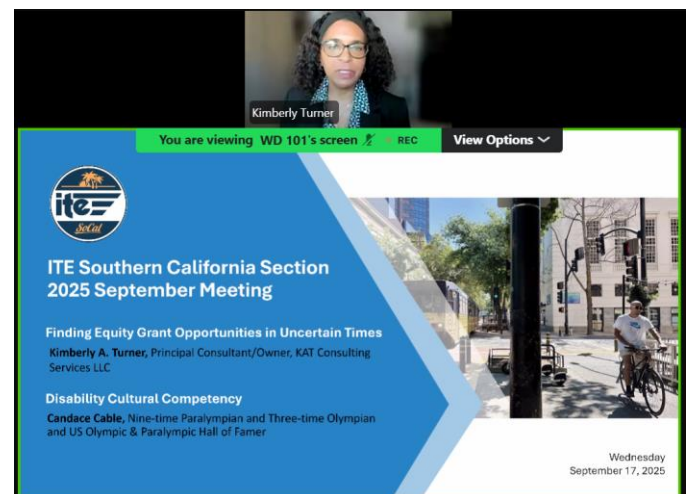
September 2025 Virtual Meeting

By Bryan Luong, Scribe, Caltrans District 12

On Wednesday, September 17, 2025, ITE SoCal hosted its September Virtual Meeting on the topics of equity grant opportunities and disability cultural competency as part of its Social Equity Series. The sponsor of this meeting was HDR. Part of the Los Angeles community since 1998 and with the Downtown LA Office opening in 2026, HDR provides transportation equity services, such as transportation equity guidelines and policy, evaluation frameworks, and social equity value assessments, for healthy, accessible, and thriving communities for all.

The first presentation, "Finding Equity Grant Opportunities in Uncertain Times," was presented

by Kimberly A. Turner, Principal Consultant/Owner of KAT Consulting Services, LLC. Ms. Turner described how over the past decade, there has been a major shift toward equity, with many funding agencies pledging to support underrepresented communities and address systemic inequities. However, equity has become a political flashpoint with some states enacting laws restricting programs or scaling back funding. Inflation and economic downturns have also led grantmakers to reallocate funds toward general operational support instead of equity-specific programs. Agencies can still secure funding without a focus on equity by aligning with grant program requirements. This means strengthening data and impact report, diversifying funding streams, and leveraging strategic partnerships at the local level. Other considerations include identifying potential impacts of proposed actions regardless of who benefits and focusing on how resolving issues in transportation planning and operations will lead to better service, planning, and delivery.



The second presentation, "Disability Cultural Competency," was presented by Candace Cable, historian, teacher, author, human rights activist, nine-time Paralympian, and three-time Olympian and Hall of Famer. Ms. Cable explored how disability is a human life experience we will all have at some point in our lives. Learning about Disability Cultural Competency will positively enhance our relationships, our work, and our lives as we develop the self-awareness to identify and engage with learned bias, values, and behaviors. This self-awareness is developed through self-assessments, where identifying how not knowing

unfamiliar topics can block our own empathy and compassion. Disability awareness can also be achieved through experience. Ms. Cable then delved into appropriate disability language and disclosed disability statistics, noting how not everyone discloses their disability for fear of bias. These statistics included, but are not limited to, how 1.2 billion people globally have disclosed they are disabled, 61 million Americans have self-disclosed a disability that impacts their major life activities, and since 2011, in the US, 7,000 to 10,000 people a day are turning 65.



What is Cultural Competency?

It is our self-awareness that we all have cultural perceptions of our own life experiences that are based in learned bias, values, traditions and behaviors that are different from other cultures.

It is being open and suspending judgement as we willingly learn and engage with all other cultures to find the best ways to connect, communicate, cooperate, understand and create systems that improve equity, participation and growth working together.

It is innovation and self reflection combined with compassion, creativity and empathy to establish a unifying evolution of how communities operate as a coalition.

October 2025 Joint Meeting with OCTEC

By Matt Stewart, Secretary, Kimley-Horn

ITE SoCal joined Orange County Traffic Engineering Council (OCTEC) for our annual joint meeting on Thursday, October 23, 2025. Program Manager Dennis Mak, P.E., and Outreach Manager Tresa Oliveri presented to attendees on the OC Streetcar Project.

The presentation covered the project background, design phase, construction phase, and challenges faced during the project. The OC Streetcar project has been a project more than 15 years in the making.

The OC Streetcar project is aims at providing a modern and efficient transportation option for residents and visitors. The route spans approximately 4 miles, connecting Santa Ana's regional rail stations to Garden Grove. This infrastructure project includes the construction of 10 stations, enhancing connectivity between major employment hubs, dining areas, educational institutions, and residential communities. With a focus on sustainability, the

streetcar aims to reduce traffic congestion, lower carbon emissions, and promote economic growth within the region.

The OC Streetcar, operated by the Orange County Transportation Authority (OCTA), is designed to support the local community's mobility needs while fostering urban revitalization. The project began construction in 2018 and is expected to commence operations soon. With modern streetcar vehicles and state-of-the-art amenities, it promises to improve accessibility and convenience for passengers. It represents a significant investment in public transit infrastructure, highlighting OCTA's commitment to innovative transportation solutions that benefit the economy, environment, and overall quality of life in Orange County.

October 2025 Student Traffic Bowl

By Emilio Murga, Student Chapter Liaison, Willdan



Traffic Bowl Participants (Photo Credit: Eric Shen)

Cal Poly Pomona was home to the 2025 ITE SoCal Traffic Bowl on Sunday, October 26th. The competition featured 5 teams: Cal State Fullerton ITE, Cal State Long Beach ITE, USC ITE, ITE at UCI, and Cal Poly Pomona ITE. As hosts, Cal Poly Pomona ITE looked to defend their 2024 win at home. While last year's runner up, USC ITE, had worked hard all year for another chance at the coveted prize.

The first round went to ITE at UCI battling tough competition from Cal State Long Beach ITE and Cal State Fullerton ITE. The second round between USC ITE and Cal Poly Pomona was a

high-scoring match that went to the home team. It set up the third round between ITE at UCI, Cal Poly Pomona, and USC ITE as the wild card.

The third round was a nail-biter that went into final jeopardy with the home team in the lead and USC ITE closely behind. However, USC ITE turned the tables on the final clue to finish on top.



Champions: USC ITE (Photo Credit: Eric Shen)

Congratulations to USC ITE and many thanks to the competing ITE Student Chapters. An extra big thanks to Cal Poly Pomona for hosting the entertaining event. Of course, thanks to all the judges, spectators, fans, and advisors who came in support. We'll see you all next year!

ITE International Update

1. Review the ITE international events calendar, [here](#).
2. ITE learning hub provides [certificate training programs](#) that are available and added monthly.
3. New [resources and publications](#) are available and added monthly.

ITE Western District Update

1. Review the [events calendar](#) for future western district events.
2. The Western District has eleven Sections over two Regions. Region 1 consists of Alaska, Hawaii, Washington, Oregon, and Northern California. Region 2 consists of Central California and Southern California. For hyperlinks to each of the twelve

Sections, Student Chapter, Helpful Section Links, and Section Awards, go to [Section Links](#)

3. Current Newsletter – [see here](#)

Hot Transportation Topics from the Southern California Association of Governments (SCAG)

1. SCAG [Grant Opportunities](#)
2. For information on upcoming meetings including the Transportation Committee and the Social Committee on Equality & Justice, go to [SCAG Committee Meetings](#).
3. For information on Transportation Models, go to [SCAG Transportation Models](#).
4. For the Upcoming Events Calendar, go to [SCAG Events Calendar](#).



AS A LEADER IN INTELLIGENT TRANSPORTATION SYSTEMS, TRAFFIC DESIGN, TRAFFIC STUDIES, AND TRAFFIC ANALYSIS, MICHAEL BAKER LEVERAGES TRANSFORMATIVE TECHNOLOGIES TO HELP CLIENTS REIMAGINE COMMUNITIES THROUGH CUSTOM MOBILITY AND TRAFFIC SAFETY SOLUTIONS.

Michael Baker
INTERNATIONAL

We Make a Difference

MTBAKERINTL.COM

TRANSPORTATION PLANNING & TRAFFIC ENGINEERING

Proud Sponsor of ITE SoCal

GANDDINI GROUP INC.
(714) 795-3100 | ganddini.com