



# INSTITUTE OF TRANSPORTATION ENGINEERS

## SOUTHERN CALIFORNIA SECTION

# NEWSLETTER

2013 – 2014, Issue No. 2

October 2013

## President's Message

*Sri Chakravarthy, PE, TE*



At the time of writing this message, we are into fifth day of the Federal shutdown. I wanted to briefly mention its potential impact on our industry. It appears that the FHWA operations will be impacted in a limited manner as it is funded by the Highway Trust Fund that has been appropriated through September next year. FTA will be shut down but the on-going projects could run with local transit agency budgets subject to reimbursements later by the FTA. One area that is of concern is safety and accident investigations by the National Transportation Safety Board that is operating in a very limited capacity due to the shutdown. Hope all of this gets resolved quickly.

## *Meeting Announcement*

**Wednesday, October 16, 2013**  
**11:30 AM**  
**Knott's Berry Farm Resort Hotel**

7675 Crescent Avenue  
Buena Park, 91754

*For Reservations visit:*

<http://itesocal1013.eventbrite.com>

*or Contact:*

**Giancarlo Ganddini, TE**, at  
[Giancarlo.ganddini@rbf.com](mailto:Giancarlo.ganddini@rbf.com)

By 4:00 PM on Wednesday,  
October 9, 2013

We had a very informative presentation last month on "What Do you need to know about Ethernet for Traffic/ITS Communications" by Donald Wang and Kevin Merrill. Towards the end of the presentation, there was also discussion about what other avenues there are to learn and equip ourselves on TCP/IP. If you missed the meeting, please reach out to someone who attended the meeting to find out about the available resources. Another highlight at the meeting was the well-deserved recognition of Eric Shen (POLB), who received the "Outstanding Educator Award" from the Western District for his support and mentorship to the ITE students through various student chapters.

I am excited to hear about an update on the ARTIC project this month by Jamie Lai, Transit Manager for the City of Anaheim. Be sure to sign up before the registration deadline ends as we expect quite an attendance at this event. We have received great feedback on our transition to Eventbrite, and with some very minor changes, I think we should be set! As always, we sincerely thank this month's newsletter sponsors **Minagar & Associates** for their continued support.

## Brief Look Ahead

### October

- Mon 14<sup>th</sup>, California High Speed Rail Authority Board Meeting at LA Metro Headquarters Board Room (One Gateway Plaza) (info: [www.hsr.ca.gov](http://www.hsr.ca.gov))
- Wed 16<sup>th</sup>, 11:30 AM, ITE So Cal Section Meeting at Knott's Berry Farm in Buena Park

### November

- Tues 5<sup>th</sup> – Thurs 7<sup>th</sup>, US High Speed Rail Association Conference, LA Metro Headquarters (info: [www.ushsr.com](http://www.ushsr.com))
- Wed 20<sup>th</sup>, 11:30 AM, ITE So Cal Section Meeting with Riverside-San Bernardino Section at Cal Poly Pomona

**2013-2014 Southern California Section Officers**

**President**

Sri Chakravarthy, PE, TE  
 Kimley-Horn & Associates  
 Ph. (747) 900-8369

[srikanth.chakravarth@kimley-horn.com](mailto:srikanth.chakravarth@kimley-horn.com)

**Vice President**

Neelam Sharma, TE  
 URS Corp.  
 Ph. (714) 433-7664

[neelam.sharma@urs.com](mailto:neelam.sharma@urs.com)

**Secretary-Treasurer**

Giancarlo Ganddini, TE  
 Michael Baker Corp  
 Ph. (949) 472-3505

[giancarlo.ganddini@rbf.com](mailto:giancarlo.ganddini@rbf.com)

**First Past President**

Andrew Maximous, PE, TE  
 City of Santa Monica  
 Ph. (310) 458-8291

[andrew.maximous@smgov.net](mailto:andrew.maximous@smgov.net)

**Second Past President**

Steven Itagaki, PE, PTOE  
 JMDiaz Inc. (JMD)

Ph. (626) 820-1137

[sitagaki@jmdiaz.com](mailto:sitagaki@jmdiaz.com)

**2013-2014 Southern California Section Chairs**

**Newsletter Editors**

Jay Dinkins, PE  
 City of Santa Monica  
 Ph. (310) 458-8963

[jay.dinkins@smgov.net](mailto:jay.dinkins@smgov.net)

David Schwegel, PE  
 Ph. (425) 466-5677

[davidmschwegel@aol.com](mailto:davidmschwegel@aol.com)

**Industry Coordinator**

Janna McKhann  
 NexTech Systems, Inc.  
 Ph. (714) 289-8940

[nextech@cox.net](mailto:nextech@cox.net)

**Legislative Analyst**

Martin Varona, EIT  
 City of Santa Ana  
 CSUF ITE – President & Founder  
 Ph. (714) 289-8940

[mvarona360@gmail.com](mailto:mvarona360@gmail.com)

**Membership Coordinator**

Ted Mekuria  
 CH2M Hill  
 Ph. (213) 228-8218

[ted.mekuria@ch2m.com](mailto:ted.mekuria@ch2m.com)

**FTA/FHWA Liaison**

Lawrence (Jesse) Glazer  
 FTA/FHWA LA Metro Office  
 Ph. (213) 202-3955

[Jesse.Glazer@fhwa.dot.gov](mailto:Jesse.Glazer@fhwa.dot.gov)

**Webmaster Chair**

Vikas Sharma  
 Kimley-Horn and Associates, Inc.  
 Ph. (818) 227-2790

[vikas.sharma@kimley-horn.com](mailto:vikas.sharma@kimley-horn.com)

**Chair of Professional Development**

Lisa Martellaro-Palmer  
 City of Los Angeles DOT  
 Ph. (213) 928-9665

[Lisa.martellaro-palmer@lacity.org](mailto:Lisa.martellaro-palmer@lacity.org)

**Scribes**

Amy Kim  
 URS Corporation  
 Ph. (714) 433-2838

[amy.kim@urs.com](mailto:amy.kim@urs.com)

Clinton Quan

City of Los Angeles DOT  
 Ph. (213) 473-3333

[clinton.quan@lacity.org](mailto:clinton.quan@lacity.org)

**Student Chapter Liaison**

Josh McNeill  
 Michael Baker Corporation  
 Ph. (949) 472-3505

[jmcneill@rbf.com](mailto:jmcneill@rbf.com)

**Sponsorship Coordinator**

Julia Wu, PE, PTOE  
 Port of Long Beach  
 Ph. (562) 283-7882

[julia.wu@polb.com](mailto:julia.wu@polb.com)

**Section Administrator**

Erik Zandvliet  
 Willdan Engineering  
 Ph. (949) 472-3505

[ezandvliet@willdan.com](mailto:ezandvliet@willdan.com)

**Technical Coordinator**

Bernard K Li, PE  
 Iteris Inc.  
 Ph. (949) 270-9633

[bkli@iteris.com](mailto:bkli@iteris.com)

**Committee Chair for Awards to Universities**

Carlos Ortiz, PE, PTOE  
 RBF Consulting  
 Ph. (949) 855-3657

[cortiz@rbf.com](mailto:cortiz@rbf.com)

**Cal Poly Pomona ITE Student Chapter's 40<sup>th</sup> Anniversary**

*Hector Salcedo, Student Chapter President*

The academic year at Cal Poly Pomona has begun! The ITE student chapter looks forward in continuing its success and providing students a connection with professionals. One of our goals this year is to get future engineers involved with the professional ITE Chapters in our area. We will encourage them to attend your monthly meetings so they can see the importance of being involved with ITE and see the professionalism that our career is about and the great sense of family that ITE has to offer.

This year marks the 40<sup>th</sup> anniversary of Cal Poly Pomona's ITE Student Chapter. We are looking to celebrate our anniversary alongside all past ITE officers and members with a dinner on our campus this spring 2014. More details will be announced soon. There have been more than 200 officers in the past 40 years and we hope to gather as many as we can for this celebration. If you are a past ITE officer or member of ITE Cal Poly Pomona and are interested in attending, please contact me (Hector Salcedo). There is contact information that we are missing for the majority of the officers so help us spread the word. You can contact me at [hectorivansalcedo@gmail.com](mailto:hectorivansalcedo@gmail.com) and visit our website for future information at [www.itecpp.wordpress.com](http://www.itecpp.wordpress.com). Also follow us on Twitter @ITECPP.

**Opportunities for Newsletter Advertising and Sponsorship**

*Julia Wu, PE, PTOE (Port of Long Beach)*

The monthly newsletter is a perfect venue for advertising your products and services, as it is circulated nine (9) times a year to approximately 800 ITE recipients all over Southern California. Advertisements are priced reasonably for the benefit of our members.

<b>Oct-13</b>	Minagar & Associates
<b>Nov/Dec-13</b>	(Available)
<b>Jan-14</b>	(Available)

The President's Message in the September 2013 Newsletter (available online at [www.itesocal.org](http://www.itesocal.org)) describes the Gold and Silver Sponsorship options. Decide which one works for you. Then please contact **Julia Wu** at **(562) 283-7882** or [Julia.wu@polb.com](mailto:Julia.wu@polb.com) to submit an ad and/or sponsor a monthly newsletter or luncheon.

**Your ad could be here!**

Reach out to hundreds of Southern California ITE members about your business. Ad space available at very affordable prices.

## Scribe Report

*Clinton Quan, PE  
LA DOT, ITE So Cal Scribe*

The Institute of Transportation Engineers Southern California Section held a meeting on Wednesday, September 18, 2013 at Monterey Hill Restaurant in Monterey Park. There were 44 people who attended the meeting. The program topic was "What you need to know about Ethernet for Traffic/ITS Communications" and it was presented by Donald Wang, Western Regional U.S. Manager of EtherWAN Systems, Inc. and Kevin Merrill, P.E., with the City of Arcadia.

Ethernet is a communication interface specification such as cables, connectors, voltage levels and impedance. It also includes protocol which defines how two machines communicate.

Kevin Merrill, P.E., with the City of Arcadia discussed the use of Ethernet for Arcadia. The City of Arcadia has a population of approximately 50,000 and is primarily a residential community. There are 72 signalized intersections in the City of Arcadia and 59 are City-controlled. The City has a closed network with a majority of the intersections using a 48 single mode fiber optic network and a few intersections use a wireless system. The network is shared with other city departments including Police, Fire and Public Works.



## Legislative Analysis

*Martin Varona, EIT, City of Santa Ana Traffic Engineering, ITE So Cal Legislative Analyst*

**AB 466 Federal Transportation Funds:** Currently certain allocated federal transportation funds may be apportioned to the state between state purposes administered by the Department of Transportation (DOT) and local and regional purposes administered by various regional agencies. These funds include those made available under the federal Congestion Mitigation and Air Quality (CMAQ) Improvement Program. AB 466 would require the DOT to allocate federal CMAQ funds to be allocated to regional agencies using a weighted formula based on region-specific population and pollution characteristics.

**AB 8 Alternative Fuel and Vehicle Technologies: Funding Programs:** Currently the Alternative and Renewable Fuel and Vehicle Technology Program (ARFVTP) provides grants, loans, loan guarantees, revolving loans, or other appropriate measures, to develop and deploy innovative technologies that would

transform California's fuel and vehicle types to help attain the state's climate change goals. AB 8 would add Intelligent Transportation Systems (ITS) as a category of projects eligible for funding under ARFVTP. AB 8 would require the CTC and the state board, in making awards under both SRFVTP and the Air Quality Improvement Program, to provide preference to projects with higher benefit-cost scores, as defined.

**AB 92 State Government:** Currently the Transit-Oriented Development (TOD) Implementation Fund allows the Department of Housing and Community Development to provide grants and loans to cities, counties, cities and counties, transit agencies, and developers to develop or facilitate the development of higher density uses within close proximity to transit stations to increase public transit riderships. Existing law appropriates various sums to this fund for use by the department for liquidation of encumbrances for specified limited timeframes. AB 92 would extend these timeframes through June 30, 2017.

## Why Collaborate with Diverse Associations?

*David M. Schwegel, PE*

Our Section already collaborates with City Traffic Engineers and the Orange County Traffic Engineers Council (OCTEC) as well as the ITE Riverside-San Bernardino, Central Coast, and San Diego Sections during our monthly meetings. Here are some other associations that individual Section members may want to collaborate with:

At the national and state level, in addition to ASCE, there is the National Society for Professional Engineers (NSPE) ([www.nspe.org](http://www.nspe.org)), the Association for Commuter Transportation (ACT) ([www.actweb.org](http://www.actweb.org)), the Women's Transportation Seminar ([www.wtsinternational.org](http://www.wtsinternational.org)), the National Association of Railroad Passengers (NARP) ([www.narprail.org](http://www.narprail.org)), the California Public Interest Research Group (CalPIRG) ([www.calpirg.org](http://www.calpirg.org)), TransForm ([www.transformca.org](http://www.transformca.org)), and Transportation California ([www.transportationca.com](http://www.transportationca.com)). At the local level, there is The Transit Coalition (<http://thetransitcoalition.us>), Move LA ([www.moveca.org](http://www.moveca.org)), Rail LA ([www.railla.org](http://www.railla.org)), and Go LA Streetcar ([www.golastreetcar.org](http://www.golastreetcar.org)).

Find out what they do and where they meet. Identify common themes. Hear their expertise. Offer your expertise. Here are two of many common themes:

1. ITE STF is currently reaching out to stakeholders to share expertise on **Mobility Hubs** (transit oriented developments).
2. The US High Speed Rail Association (USHSR) ([www.ushsr.com](http://www.ushsr.com)) is reaching out to thousands of stakeholders to share expertise on **High Speed Rail** at their upcoming Conference at LA Metro Headquarters, November 5 (Tuesday) – 7 (Thursday).

Proactively come to the table. Learn about the value that these and other stakeholders bring to these and other areas. Educate stakeholders and decision makers on the value that Transportation Planners and Engineers bring through participation in networking events, conferences, and public meetings. Together we can make considerable progress in expanding our transportation and station area development infrastructure.

**USC ITE First Speaker Meeting with  
Jessica Wethington McLean**  
*Rosa Lau, Student Chapter Vice President*



The USC ITE Student Chapter, now in its fourth year, welcomed Jessica Wethington McLean, Executive Director of Los Angeles City Councilmember José Huizar’s Bringing Back Broadway Initiative on September 16, 2013 for our first speaker meeting (co-hosted with USC ASCE) of the 2013-2014 school year.

As Executive Director, Jessica is in charge of overseeing policies and projects relating to the Bringing Back Broadway Initiative. This Initiative is a multi-faceted public-private partnership with goals of historic preservation, urban planning, economic development, and transportation systems, focused on the Historic Broadway corridor in downtown Los Angeles. She works with the City departments, other public agencies, and the businesses and community stakeholders involved with this initiative. She also leads the Board of Trustees on behalf of Councilmember Huizar.

During the presentation, Jessica touched on several points regarding the project. She discussed the progress and milestones of the project which launched in 2008. She also talked about the historic lighting guidelines, the streetscape master plan, job creation and the LA Streetcar. The Downtown LA Streetcar is a centerpiece aspect of Bringing Back Broadway. It will link with regional transit to connect Downtown’s many exciting neighborhoods and attractions. Creating a connective transit loop around these districts will benefit local residents, employees of Downtown and those looking to explore the greater community. It is currently under environmental review and planned for construction in 2015-17.

Undergraduate and graduate students from the USC Viterbi School of Engineering and USC Price School of Public Policy attended the meeting. During the presentation, Jessica answered many of our students’ questions regarding her career path and specific aspects of the project. Our members were most interested in learning more about the Streetcar and how it will affect transportation in downtown LA.

Under the direction of Professor Eric Shen, we aim to provide and inform students of opportunities that will allow them to learn more about the transportation industry. Student members are looking forward to visiting Caltrans District 7 LARTMC and the City of Pasadena Traffic Management Center on 10/16/13. We cannot express our appreciation enough for the supports and guidance from many professionals. We are currently looking for more speakers and field-trip opportunities for our members. If you or your company is interested in supporting us, please send us an email at [iteusc@gmail.com](mailto:iteusc@gmail.com). Thank you!

**Trivia Corner: “The Seven-Ten”**  
*Andrew Maximous, PE, TE, City of Santa Monica  
ITE So Cal Past-President*

In 1934, State Route 15 was signed along Atlantic Blvd from State Route 1 (PCH) in Long Beach to Garvey Ave (US-99 now I-10) in Monterey Park. This location is not very far from the site of our ITE monthly meetings. An extension in 1947 took SR 15 north to Pasadena along Los Robles Ave; a decision that still reverberated to this day.

Construction of the Long Beach Freeway began in 1953 with plans to keep the route signed as CA-15. However, as part of the statewide renumbering in 1964 the entire route of CA-15 was changed to State Route 7 as it conflicted with emerging Interstate 15. Prior to 1964, SR-7 was signed along Sepulveda Blvd and renumbered as Interstate 405 with construction of the San Diego Freeway.



The full stretch of the Long Beach Freeway was completed in 1975 and was approved as a chargeable interstate in September 1983. By 1984, all SR-7 signs were replaced with I-710. Shortly after a windstorm a few years ago, an I-710 overlay shield came off an overhead structure along the northbound portion of I-710 just south of CA-60 and revealed an original CA-7 signs.



The small stub of freeway in Pasadena that is south of the I-210/SR-134 interchange is still officially I-710 and maybe one day will be connected with the rest of the route with the gap closure project.





# MINAGAR & ASSOCIATES, INC.

## ITS - Traffic/Civil/Electrical Engineering - Transportation Planning - CEM



2012 Winner of Cal-EPA/California Air Resources Board's Cool California Climate Leader



2011 Award of Excellence in Service by Los Angeles County MTA/Metro in the County of Los Angeles



2010 Award of Excellence in Service by Los Angeles County MTA/Metro in the County of Los Angeles



2009 Winner of the ASCE's Outstanding Private Sector Civil Engineering Project in Metropolitan Los Angeles



2009 Winner of the Caltrans' 2009 Excellence in Transportation Award in the State of California



2007 Winner of the ASCE's Outstanding Public/Private Sector Civil Engineering Project in Metropolitan Los Angeles



2005 Winner of the APWA's Best Traffic Congestion Mitigation Project of the Year in Southern California



2004 Top Nominee of Transportation Foundation's Highway Management Program in the State of California



2003 Winner of the PTI's Best Transportation Technology Solutions Award in the United States



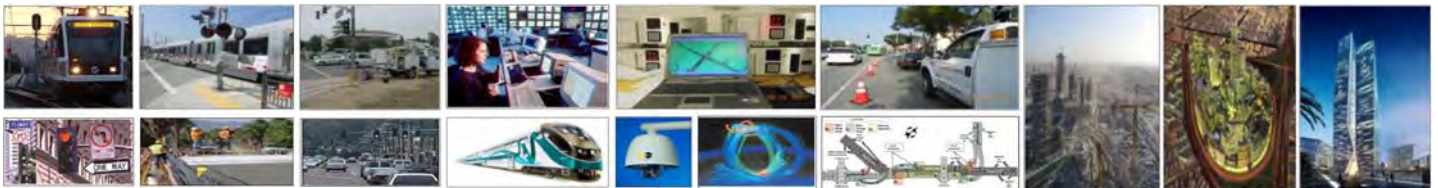
2002 Winner of the ITS-CA's Best Return on Investment Project Award in the State of California



2000 Award of Excellence in Service by Los Angeles County MTA/Metro in the County of Los Angeles



Celebrating 20 Years of Design Excellence



- Transportation Planning
- ITS (Intelligent Transportation Systems)
- Traffic/Civil/Electrical Engineering
- Homeland Security
- Construction Engineering Management



### MINAGAR & ASSOCIATES, INC.

18662 MacArthur Blvd., Airport Business Center, Suite 435  
Irvine, CA 92612

Tel: (949)727-3399

Tel: (949)553-0222

Fax: (949)727-4418

Fax: (949)553-0232

E-Mail: [minagarf@minagarinc.com](mailto:minagarf@minagarinc.com)



Web: [www.minagarinc.com](http://www.minagarinc.com)

INSTITUTE OF TRANSPORTATION  
ENGINEERS



P R E S E N T S

Our October Lunch Meeting  
at  
Knott's Berry Farm Hotel  
7675 Crescent Avenue  
Buena Park, CA 90620

**WEDNESDAY**  
**10.16.2013**  
**11:30 AM**

# ARTIC PROJECT UPDATE

by **JAMIE LAI, P.E.** | TRANSIT MANAGER, *CITY OF ANAHEIM*

**EARLY REGISTRATION ENDS AT 4 PM ON 10.9.13**

Please register online at <http://itesocal1013.eventbrite.com>

For questions or student discount code, please contact:

*Giancarlo Ganddini, T.E.  
Secretary/Treasurer  
ITE Southern California Section  
giancarlo.ganddini@rbf.com*

Early Registration \$30 | Registration \$35 | Students \$10