



INSTITUTE OF TRANSPORTATION ENGINEERS

SOUTHERN CALIFORNIA SECTION

NEWSLETTER

2014 – 2015, Issue No. 2

October 2014

President's Message

Neelam Dorman, TE



A noteworthy event was hosted this past month in New York, the 2014 United Nations Climate Summit. Though this event is a precursor to the Paris 2015 Convention where a climate agreement is to be made, it did generate awareness and possibly added momentum to the convention. An overarching commitment was made to limit global temperature rise to less than 2 degrees Celsius from pre-industrial levels. The European Union countries are planning on reducing emissions to 40 per cent below the year 1990 levels by the year 2030. Specific to our field,

"the transport sector brought substantial emissions reduction commitments linked to trains, public transportation, freight, aviation, and electric cars, which together could save \$70 trillion by the year 2050 with lower spending on vehicles, fuel and transport infrastructure." The conclusions of the climate agreement could affect our industry significantly so we should keep our eyes on the convention next year.

Our September presentation by Chuck Dankocsik of TransCore on Caltrans Statewide Traffic Signal Management & Surveillance System (TSMSS) was informative and well received. If you need any more information please contact one of the Section board members and we'd be happy to help.

For our October Meeting in Buena Park, we are excited to have Chris Ganson from the Governor's Office of Planning and Research (OPR) along with Erik Ruehr, our ITE representative on SB 743, informing us of the proposed guidelines. SB 743 has been on everyone's mind so we hope that this presentation will be informative and also give you a chance to ask questions. The comment period on the Draft SB 743 Guidelines has been extended to November 21st. ITE's draft comment letter is posted on the WesternITE website at westernite.org for your review and comments. Be sure to sign up before the registration deadline ends as we expect quite an attendance at the meeting. If there are specific topics you'd like to see in our meeting, please let us know and we'll do our best to bring them to you.

In other news, some of you may have noticed, our website is currently under construction. Our Webmaster, Saly Heng, is working hard and we are looking forward to giving you easier access to the Section through the updated website. The website will likely be down for another month, so please bear with us.

Thank you to this month's newsletter sponsors Minagar & Associates, we truly appreciate your support. Please contact our Sponsorship Chair Melissa Countryman (MelissaC@rpv.com) for sponsorship opportunities.

Next Meeting

**Wednesday, October 15,
11:30 AM
Section Meeting**

Draft SB 743 Guidelines

Chris Ganson (Governor's OPR)
Erik Ruehr (VRPA Tech & ITE
Representative on SB743)

Knott's Berry Farm Resort Hotel
7675 Crescent Ave, Buena Park

REGISTER [HERE!](#)

Brief Look Ahead

October 2014

– Tue 14th - Thurs 16th, ITS California Annual Meeting, Hyatt Regency, Santa Clara - www.itscalifornia.org

December 2014

– Tue 2nd - Thurs 4th, US High Speed Rail Association Conference, Los Angeles Metro Headquarters - www.ushsr.com

July 2015

– Sun 19th - Wed 22nd, Western District Annual Meeting, Planet Hollywood Resort, Las Vegas - www.lvite2015.com

ITE Southern California Section
www.itesocal.org

2014-2015 Southern California Section Officers

President
 Neelam Dorman
URS Corporation
neelam.dorman@urs.com



Vice President
 Giancarlo Ganddini
RBF, Michael Baker Int'l
giancarlo.ganddini@mbakerintl.com



Secretary
 Jay Dinkins
City of Santa Monica
jay.dinkins@smgov.net



Treasurer
 Dean Lehman
LA County Public Works
dlehman@dpw.lacounty.gov



First Past President
 Sri Chakravarthy
Kimley-Horn & Associates
srikanth.chakravarth@kimley-horn.com



Second Past President
 Andrew Maximous
City of Santa Monica
andrew.maximous@smgov.net



2014-2015 Southern California Section Chairs

Sponsorship Coordinator
 Melissa Countryman
City of Rancho Palos Verdes
melissac@rpv.com



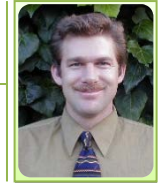
Scribes
 Angel Morales
Kimley-Horn & Associates
angel.morales@kimley-horn.com



Industry Coordinator
 Janna McKhann
NexTech Systems, Inc.
nextech@cox.net

Clinton Quan
City of Los Angeles DOT
clinton.quan@lacity.org

Section Administrator
 Erik Zandvliet
Willdan Engineering
ezandvliet@willdan.com



Legislative Analyst
 Martin Varona
UCLA
mvarona360@gmail.com



FTA/FHWA Liaison
 Lawrence (Jesse) Glazer
FTA/FHWA LA Metro Office
Jesse.Glazer@dot.gov

Membership Coordinator
 Amy Kim
URS Corporation
amy.kim@urs.com



Student Chapter Liaisons
 Hassan Ahmed
Gibson Transportation
hahmed@gibsontrans.com



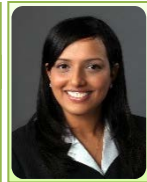
Newsletter Editors
 David Schwegel
Precision Civil Engineering
davidmschwegel@aol.com



Josh McNeill
RBF, Michael Baker Int'l
jmcneill@mbakerintl.com



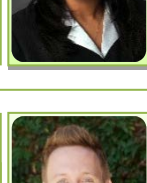
Sowmya Chandrasekhar
Iteris, Inc.
sxc@iteris.com



Technical Coordinator
 Bernard Li
Iteris, Inc.
bkl@iteris.com



Professional Activities Chairs
 Vikas Sharma
Kimley-Horn & Associates
vikas.sharma@kimley-horn.com



Webmaster Chairs
 Saly Heng
UCLA
saly.heng@kimley-horn.com



Eric Dunlap
LA County Public Works
edunlap@dpw.lacounty.gov



Tiffany Huang
Kimley-Horn & Associates
tiffany.huang@kimley-horn.com



Scribe Report

Panayiota Georgalis/Angel Morales

The Institute of Transportation Engineers Southern California (ITE-SoCal) Section monthly meeting was held on Wednesday, September 17, 2014 at the Monterey Hill Restaurant. The topic of this meeting was “Caltrans Statewide Traffic Signal Management & Surveillance System (TSMSS),” presented by Chuck Dankocsik of TransCore. The monthly meeting began with a warm welcome from our president, Neelam Dorman, and introductions around the room. Adnan HindiyeH was recognized as an ITE Life Member, for his 15+ year involvement. Neelam made the following announcements:

- ITE’s new “30 to 30” payment plan was announced. Dues start at \$0 at age 23, increasing by \$30 every year through age 30.
- Construction of the new ITE-SoCal website is underway and would be revealed in a month.
- ITS California’s 20th Annual Conference and Exhibition is to be held October 14-October 16, 2014 at the Hyatt Regency in Santa Clara. Visit www.itscalifornia.org for more info.
- The ITE Western District Meeting at Planet Hollywood Resort in Las Vegas would take place July 19-July 22, 2015. Visit www.lvite2015.com for more info.

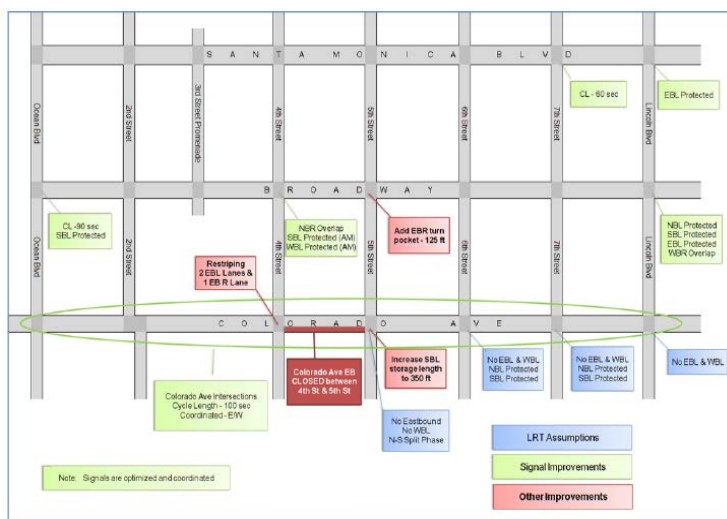
Our speaker of the meeting, Chuck Dankocsik, sparked a myriad of questions regarding Traffic Signal Management & Surveillance System (TSMSS). A few excerpts from his presentations are as follows – In June 2012, Caltrans had initiated TransCore to improve the Caltrans Statewide Traffic Signal Management and System (TSMSS) and install the TransSuite® System in all 12 Caltrans Districts and Caltrans’ Headquarters in Sacramento. Transuite allows the “integration, control, & monitoring of Caltrans’ 2070 controllers running the TSCP firmware” and “enhanced/developed interface to TSCP.” The program allows the user to import graphics including photographs, BMP, drawing tools, and even supports hyperlinks and supports once-per-second monitoring. Features for Traffic Engineers include real-time split monitor, real-time time-space diagram, traffic responsive operations, transit signal priority, and Synchro® interface.

If you would like to submit a technical article for the next issue of the newsletter, please contact David Schwegel (davidmschwegel@aol.com) or Sowmya Chandrasekhar (scx@iteris.com), for details.

Simulating Street-Running LRT Terminus Station Options in Dense Urban Environments

Rajat Parashar/Shaumik Pal – Iteris, Inc.

The Exposition Corridor transit project is a light rail (LRT) project connecting Downtown Los Angeles to Downtown Santa Monica. Most of the rail line within the City of Santa Monica would operate at-grade along surface streets. As part of the design build process, the Exposition Construction Authority and the City of Santa Monica worked extensively to evaluate different alignment alternatives for the terminus station at Colorado Avenue and 4th Street.



Click on the image for an enlarged view.

A comprehensive analysis was completed by the project team, using VISSIM micro simulation software as the primary tool, both for analysis and visualization. The analysis study area included 26 intersections in the City of Santa Monica. Extensive model calibration and validation was done for the existing conditions to accurately project the future operations with a street-running light rail system.

As integration of rail and traffic can lead to complex issues in a multimodal city like Santa Monica, finding the middle ground to maintain acceptable train speeds and not impede traffic operations was a special challenge. In addition, the proximity of the station to freeway off-ramps, and the decision regarding the location of crossover complicated the analysis.

The alternative analysis concluded with identification of necessary improvements to mitigate the impacts. The improvements considered for further study included: transit signal priority, signal improvements, turn restrictions turn lane additions, lane restriping, and

street closures. A total of 10 different alternatives were analyzed including a future no-build alternative. These alternatives varied in terms of LRT alignment near the station and lane closures in the study area. The alternative analysis used VISSIM as a tool by both the City and the Expo Authority to discuss and recommend the final alignment alternative.

Extensive agency and stakeholder coordination took place in selecting the preferred alignment. Modeling the LRT with automobile traffic posed a unique challenge in this pedestrian dominated environment.

Legislative Analysis

Martin Varona, EIT

SB 1183: Vehicle Registration Fees. Surcharge for Bicycle Infrastructure: This bill would allow a city, county, or regional park district to impose and collect, upon approval by 2/3 of local voters, a motor vehicle registration surcharge of not more than \$5 for bicycle infrastructure purposes until January 1, 2025. These surcharges would be used for improvements to paved and natural surface trails and bikeways, including existing and new trails and bikeways and other bicycle facilities. The bill would limit to 5% the amount of net revenues that may be used by the local agency for its administrative expenses in implementing these provisions. Governor Brown approved this bill on September 20th.

AB 1193 Update: Bikeways: On September 20th, Governor Brown approved the "Protected Bikeways Act". This legislation urges Caltrans to create guidelines for protected bike lanes by January 1, 2016. Another measure of this bill would allow local agencies to follow Caltrans standards for bicycle infrastructure or use some other guidance to meet minimum safety criteria.

AB 2398: Pedestrians and Bicyclists: This bill proposes to raise the fines charged when drivers cause injury to vulnerable road users. Current law provides that a conviction for a violation involving bodily injury is punishable by a fine of \$70 and for a violation involving great bodily injury by a fine of \$95. Should Governor Brown approve this bill, the fines will increase to \$220 and \$300, respectively.

AB 2707: Vehicle Length Limitations: Transit agencies conformed to a certain length limitations for a bus mounted with bike racks. AB 2707 was approved by the Governor earlier in September and will allow transit agencies to make better use of the bus mounted bike racks. Buses typically can hold 2 bikes on the rack however with the increased length allowed by this bill a third bike may now be mounted.

Student Chapter Spotlight: ITE CPP

Brandon Wong, ITE CPP President

The Institute of Transportation Engineers Cal Poly Pomona (ITECPP) Student Chapter provides opportunities for students and faculty to enhance their engineering experience through guest speakers, technical tours, conferences, outreach and more. General Meetings are biweekly on Thursdays.

ITECPP will begin the year volunteering at the Science Fair EXPO in Riverside. This one-day event highlights science and engineering student projects in the community from the past year. ITECPP promotes its "hands-on" engineering approach by displaying interactive activities, such as supporting textbooks with paper-rolled columns or controlling a network of traffic signals at the touch of a button, to the entertainment of students, parents and teachers.



ITECPP members mix fun with work during their Annual storage room cleanup

ITECPP will continue to publicize its applications and opportunities throughout the year with the use of social media apps, Facebook and Twitter. A newly-created Instagram account will document the involvement and activity of the officers and members. There are also plans on developing a mobile app for the upcoming 2015 ITE Western District Annual Meeting that will include the overall agenda of the Annual Meeting, detailed information on the technical presentations and poster competition, and assist with registration duties.

Other planned events for the upcoming year include attendance at the Riverside-San Bernardino ITE (RSBITE) and Southern California ITE (SoCal ITE) Monthly Meetings, participation in the SoCal ITE Collegiate Traffic Bowl, and volunteering at the RSBITE Golf Tournament. ITECPP will also be attending the ITE Student Leadership Summit, hosted by Sacramento State University, in February and plans on submitting a bid to host next year's Student Leadership Summit. And the annual ITECPP Banquet is an end-of-the-year

celebration that invites past officers, members, and advisors to reflect on the accomplishments of the past year and introduce the new officers for next year.



ITECPP and UCI ITE at the MiteY Race at Rapid City, SD at the Joint Western/Midwestern District ITE Annual Meeting

Transportation Perspectives from the US Capitol

David M. Schwegel, PE

In September, US High Speed Rail Association (USHSR) (www.ushsr.com) President & CEO Andy Kunz, Vice President Joe Shelhorse, and Director of Operations & Policy Daniel Krause participated in and/or reported on Federal Hearings on three vital transportation topics.

Public Private Partnerships: Congressman **John J. Duncan** (R-TN) chaired the Public-Private Partnerships (P3) Hearings focused on using P3's to expedite delivery of transportation projects, spotlighting Denver's Eagle P3 Project that would have taken 30 years to complete without P3.

Streamlining Environmental Approvals: Congressman **Tom Petri** chaired a Hearing of the Subcommittee on Highways and Transit to streamline the federal environmental review and permitting process for transportation projects. Carlos Braceras (Utah DOT), Lynn Peterson (Washington State DOT), Carlos Swonke (Texas DOT), and Michal Kraman (Transportation Corridor Agencies) testified in support of streamlining environmental approvals. Mr. Shelhorse notes, "We look forward to working with the committee to simplify and accelerate high speed rail projects across America."

Rail Reauthorization: The House passed a 4-year Rail Reauthorization bill that simplifies Railroad Rehabilitation and Improvement Financing (RRIF) and

encourages a portion of Transit Oriented Development (TOD) around stations to fund rail projects. The bill fails to provide short-term funding for rail despite 88% of Americans supporting HSR investment and at least 20 nations (excluding the US) operating true HSR systems. Mr. Kunz notes that "USHSR is calling for a federal investment of \$20 billion per year for the next three decades."

Los Angeles Conference: ITE SoCal Members are encouraged to follow the progress and discuss the outcomes at the USHSR Conference, December 2-4, at Los Angeles Metro Headquarters, <http://ushsr.com/events/losangeles2014.html>.

Career Opportunities

The Los Angeles Department of Transportation (LADOT) is looking for a part time student worker for their Public Information Office. For details, go to www.lahc.edu/LADOT%20College%20Internship.pdf.

Iteris, Inc. is seeking Transportation professionals at all levels for various US locations to help support and grow their Transportation Practice. Please use this link to explore and apply for open positions: [Apply Here](#).

Message from the Student Liaisons Chairs

We are looking for professionals who are interested in presenting to our student chapters. These presentations could include technical topics as well as general tips about careers and the professional world.

For more information, please contact Hassan Ahmed (hahmed@gibsontrans.com) or Josh McNeill (jmcneill@mbakerintl.com).

Opportunities for Newsletter Advertising and Sponsorship

The monthly newsletter is a perfect venue for advertising your products and services, as it is circulated nine (9) times a year to approximately 700 ITE recipients all over Southern California. Advertisements are priced reasonably for the benefit of our members.

Please contact Melissa Countryman at 310-544-5256 or melissac@rpy.com to submit an ad and/or sponsor a monthly newsletter or luncheon.



SOUTHERN CALIFORNIA
SECTION

**2014-2015
CALENDAR**



<p>AUGUST 2014 ITE ANNUAL STEAK FRY BARBEQUE Wed. Aug 20, 2014</p> <p>MONTEREY HILL, Monterey Park Dinner – 5:30pm</p>	<p>SEPTEMBER REGULAR ITE MEETING Sept. 17, 2014</p> <p>MONTEREY HILL, Monterey Park Lunch – 11:30am</p>	<p>OCTOBER REGULAR ITE MEETING Wed. Oct. 15, 2014</p> <p>Knott's Berry Farm Resort Hotel Buena Park Lunch – 11:30am</p>
<p>NOVEMBER JOINT MEETING RIVERSIDE- SAN BERNARDINO SECTION Wed. Nov. 19, 2014</p> <p>Location TBD Lunch – 11:30am</p>	<p>DECEMBER HOLIDAY MIXER Wed. Dec. 10, 2014</p> <p>Los Coyotes, Buena Park 5:30 PM</p> 	
<p>JANUARY 2013 JOINT MEETING CITY TRAFFIC ENGINEERS Wed. Jan. 21, 2015 (tentative)</p> <p>MONTEREY HILL, Monterey Park Lunch – 11:30am</p>	<p>FEBRUARY JOINT MEETING CENTRAL COAST SECTION Tues. Feb. 17, 2015</p> <p>Los Robles Greens Thousand Oaks Lunch – 11:30am</p>	<p>MARCH JOINT MEETING SAN DIEGO SECTION Fri. March 20, 2015</p> <p>El Adobe Restaurant San Juan Capistrano 10:00am – 2:00pm Workshop, 12:00 lunch</p>
<p>APRIL REGULAR ITE MEETING Wed. April 15, 2015</p> <p>MONTEREY HILL, Monterey Park Lunch – 11:30am</p>	<p>MAY JOINT MEETING OCTEC Student Chapter Presentations Wed. May 20, 2015</p> <p>Knott's Berry Farm Resort Hotel Buena Park Dinner – 5:00pm</p>	<p>JUNE MINI-WORKSHOP ANNUAL BUSINESS AND JOINT MEETING WITH ITS SOCAL Wed. June 17, 2015</p> <p>MONTEREY HILL, Monterey Park 8:30am – 2:00pm Workshop, 12:00 lunch</p>

NOTES: Schedule was last updated July 2014. Some information is subject to change.



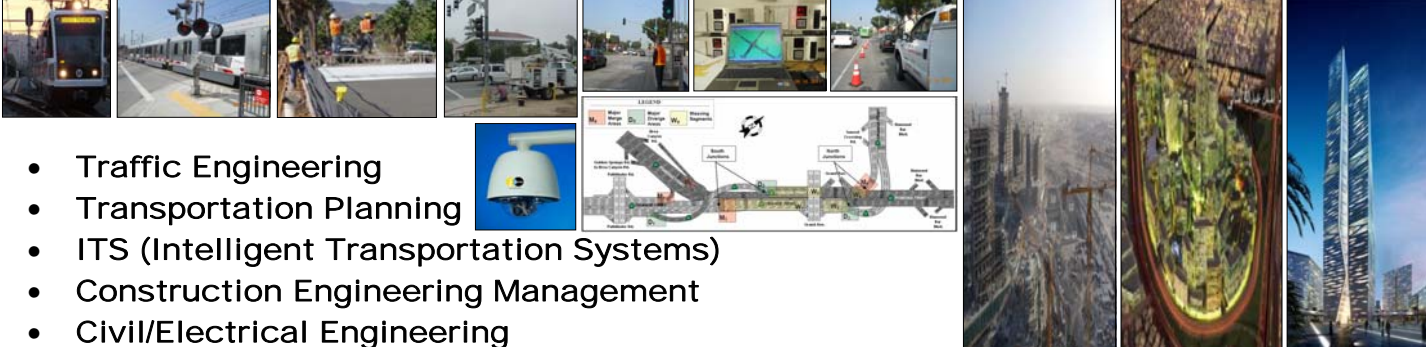
MINAGAR & ASSOCIATES, INC.

ITS - Traffic/Civil/Electrical Engineering - Transportation Planning - CEM

	2014 Orange County Business Journal's 2014 Excellence in Entrepreneurship Award Nominee	
	2012 Winner of Cal-EPA/California Air Resources Board's Cool California Climate Leader	
	2011 Award of Excellence in Service by Los Angeles County MTA/Metro in the County of Los Angeles	
	2011 Award of Excellence in Service by Los Angeles County MTA/Metro in the County of Los Angeles	
	2010 Award of Excellence in Service by Los Angeles County MTA/Metro in the County of Los Angeles	
	2009 Winner of the ASCE's Outstanding Private Sector Civil Engineering Project in Metropolitan Los Angeles	
	2009 Winner of the Caltrans' 2009 Excellence in Transportation Award in the State of California	
	2007 Winner of the ASCE's Outstanding Public/Private Sector Civil Engineering Project in Metropolitan Los Angeles	
	2005 Winner of the APWA's Best Traffic Congestion Mitigation Project of the Year in Southern California	
	2004 Top Nominee of Transportation Foundation's Highway Management Program in the State of California	
	2003 Winner of the PTI's Best Transportation Technology Solutions Award in the United States	
	2002 Winner of the ITS-CA's Best Return on Investment Project Award in the State of California	
	2000 Award of Excellence in Service by Los Angeles County MTA/Metro in the County of Los Angeles	

Celebrating 21 Years of Design Excellence

- Traffic Engineering
- Transportation Planning
- ITS (Intelligent Transportation Systems)
- Construction Engineering Management
- Civil/Electrical Engineering



MINAGAR & ASSOCIATES, INC.

18662 MacArthur Blvd., Airport Business Center, Suite 435
Irvine, CA 92612

Tel: (949)727-3399 - (949)553-0222
Fax: (949)727-4418 - (949)553-0232
Web: www.minagarinc.com

21 Years of Excellence

