



INSTITUTE OF TRANSPORTATION ENGINEERS

SOUTHERN CALIFORNIA SECTION

NEWSLETTER

2017 – 2018, Issue No. 8

May 2018

President's Message

Dean Lehman, PE



Dear ITE Southern California Members,

On April 11th, we had our Luncheon Meeting at the Los Angeles County Department of Public Works. **Emiko Thompson, PE** and **Daniel Quintana, PE, TE, PTOE** gave very interesting presentations on "Safety Improvements on Rural Roads in unincorporated Los Angeles County" followed by a tour of DPW's Traffic Management Center. We had over 50 attendees. Thank you **Counts Unlimited** for sponsoring this event.

NEXT MEETING

2018 Job Fair & Student Presentation Night

Wednesday, May 16, 2018
5:30 PM to 9:00 PM

Knott's Berry Farm Hotel
7675 Crescent Ave
Buena Park, CA 90260

Register at:
https://2018_ite_socal_octec_student_night.eventbrite.com/

The next ITE SoCal Section Social Event will be a Ping Pong Tournament at the KOA Irvine Office, 18200 Von Karman Ave, Suite 550 on May 31st. Please mark your calendars, and plan to attend to network with your peers in our industry.

Our next meeting is the Student Chapter Night with OCTEC on Wednesday, May 16th. The Job Fair starts at 5:30 p.m., and the Dinner starts at 7 p.m. This is a great opportunity for companies to meet with students in our industry. Thank you **ITS-CA** for sponsoring the Student Night Dinner. Thank you **Advantec Consulting Engineers, Albert Grover & Associates, FPL & Associates, Gibson Transportation Consulting, HDR, Iteris, Jacobs, Kimley-Horn & Associates, RailPros, and Trafficware** for sponsoring Booths at the Job Fair. Thank you **Econolite, Iteris, Kimley-Horn & Associates, NDS, Trafficware, Western Systems, and South Coast Lighting** for sponsoring this newsletter.

In addition, I am pleased to share that we have two excellent candidates running for our Treasurer position this year. Dina Saleh and Hassan Ahmed have both served the Southern California Section very well on various committees. Please be sure to place your vote when the elections open.

Brief Look Ahead

May 2018

- 9th, UCI ITE Student Chapter 6th Annual Multi-Vendor CV Technology Deployment: Presentation Night & Dinner
- 10th, ICTPA SoCal Workshop on SB1, OCTA Outlook, Highway Improvements, and OC Streetcar
- 24th, Autonomous Vehicle Orange County Conference, Doubletree Suites by Hilton Anaheim Resort

June 2018

- 10th - 13th, National Travel Monitoring Exposition and Conference, Irvine, CA <http://natmec.org>
- 13th, Mini-Workshop/Annual Business & Joint Meeting with ITS SoCal, Monterey Hill Restaurant
- 24th - 27th, Western District Annual Meeting, Keystone, Colorado, www.westernite.org

August 2018

- 20th - 23rd, ITE International and Midwest/Great Lakes Districts Annual Meeting, Minneapolis, MN, www.ite.org

October 2018

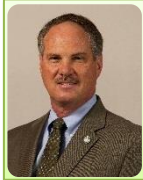
- 1st - 3rd, ITS California Annual Meeting, Anaheim Marriot, Anaheim, CA, www.itscalifornia.org
- 1st - 4th, NACTO Designing Cities Conference, InterContinental Downtown Los Angeles, CA, <https://nacto.org/conference/designing-cities-2018-los-angeles/>
- 21st - 24th, National Rural ITS and ITS Arizona Annual Conference & Exhibit, Fort McDowell, AZ

ITE Southern California Section
www.socalite.org

2017-2018 Southern California Section Officers

President

Dean Lehman
County of Los Angeles
dlehman@ceo.lacounty.gov

**Vice President**

Josh McNeill
Iteris, Inc.
jmcneill@iteris.com

**Secretary**

Sowmya Chandrasekhar
Iteris, Inc.
scx@iteris.com

**Treasurer**

Ed Alegre
LA Metro
AlegreE@metro.net

**First Past President**

Jay Dinkins
City of Santa Monica
jay.dinkins@smgov.net

**Second Past President**

Giancarlo Ganddini
Kunzman Associates, Inc
giancarlo@traffic-engineer.com



2017-2018 Southern California Section Chairs

Sponsorship Coordinators

Jonathan Hofert
LA Metro
HofertJ@metro.net



Meghavardhan Govindu
Gunda Corporation
mgovindu@gundacorp.com

**Industry Coordinator**

Janna McKhann
NexTech Systems, Inc.
nexotech@cox.net

**Legislative Analyst**

Martin Varona
KOA Corporation
mvarona@koacorp.com

**Membership Coordinator**

Amy Kim
Iteris, Inc.
alk@iteris.com

**Newsletter Editors**

David Schwegel
Precision Civil Engineering
davidmschwegel1@gmail.com



Dina Saleh
LA Metro
SalehD@metro.net

**Professional Activities Chairs**

Hassan Ahmed
Kittelson & Associates, Inc.
hahmed@kittelson.com



Nora Chin
LA DOT
nora.chin@lacity.org

**Scribes**

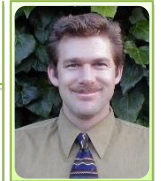
Sandhya Perumalla
Stantec
Sandhya.Perumalla@stantec.com



*Scribe
Volunteer Needed
Los Angeles Based Member*

**Section Administrator**

Erik Zandvliet
City of Manhattan Beach
ezandvliet@citymb.info

**FTA/FHWA Liaison**

Lawrence (Jesse) Glazer
FHWA/FTA LA Metro Office
Jesse.Glazer@dot.gov

**Student Chapter Liaisons**

Saly Heng
Berg & Associates, Inc.
sheng@lawa.org



Kaylenn Pell
LA DOT
kaylenn.pell@lacity.org

**Technical Coordinator**

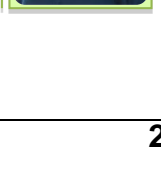
Bernard Li
Iteris, Inc.
bkl@iteris.com

**Social Media Administrator Chairs**

Ashley Kim
DKS Associates
ashley.kim@dksassociates.com



Marc Violett
Michael Baker International
marc.violett@mbakerintl.com



A New Way of Getting from LA Union Station to Dodger Stadium by 2022

David M. Schwegel, PE (Precision Civil Engineering)

Several mountainous urban environments throughout the world enjoy aerial tramway systems that transport groups of passengers (typical capacity of around 120 passengers per vehicle) while showcasing the region's scenic beauty. Such systems are able to fly above challenging topography while requiring minimal right-of-way. Systems are currently in operation in Rio De Janeiro, Brazil; Vancouver, British Columbia, Canada; and Portland, Oregon. The Portland tram opened in 2007. It is one of only two urban transportation application systems in the United States, and the first one to open in the US in almost 50 years within an urban environment.



*Aerial Tramway to Grouse Mountain in British Columbia
(Photo Credit: www.tripadvisor.com)*

According to an *LA Curbed* article (www.la.curbed.com) entitled "Aerial tram proposed for Dodger Stadium" by Jenna Chandler and Matt Tinoco dated Thursday, April 26, Los Angeles could join this list by 2022. Aerial Rapid Transit Technologies, LLC submitted a proposal for this privately-funded \$125 million project to Los Angeles Metro on Wednesday, April 25 in cooperation with Los Angeles Mayor Eric Garcetti, who is also the chair of Metro's Board of Directors. Currently 3.7 million fans visit Dodger Stadium annually, relying on both a bus shuttle from Union Station, and private automobiles, posing significant congestion, especially along Interstate 5 and Sunset Boulevard. Garcetti regards such a concept as both "a world class aerial transit system" and a "bold idea to ease congestion".

Numerous proposals have been submitted over the past couple of decades for a more direct connection between Union Station and Dodger Stadium. Such proposals have included elevated railways and monorail systems. If this aerial tramway concept is deemed feasible, then Aerial Rapid Transit Technologies would acquire private financing, while LA Metro would undertake route selection and right-of-way acquisition activities.

Scribe Report: April 2018 Meeting and Technical Tour at LA County

Sandhya Perumalla (Stantec Consulting)

The ITE So-Cal Section hosted its monthly Luncheon for the month of April in the Alhambra Room at Los Angeles County Department of Public Works. There were more than 50 professionals in attendance. **Ms. Emiko Thomson, PE** and **Mr. Daniel Quintana, PE, TE, PTOE** gave a presentation on "Safety Improvements on Rural Roads in unincorporated Los Angeles County".



*Attendees at the April Luncheon
(Photo Credit: Sowmya Chandrasekhar)*

Ms. Thomson was the first to present, and she provided details on the Rural Roadways program under the County's jurisdiction including the number and types of crashes. Mr. Quintana presented on the low-cost treatments used by the County following the FHWA Handbook to improve signing and striping along the County's roadways. The focus of the presentation was on horizontal curves. He shared information on a few sample completed projects. One of the treatments presented was the Optical Speed Bars (paint) used at Agua Dulce Canyon Road. He described the challenges involved and the funding issues in general. There was a

question and answer session at the end of the presentation.

At the end of this meeting, the Section was informed of the passing away of Frank Barnes that morning. We observed a two-minute silence in his honor.

Announcements were made regarding upcoming events and job opportunities including the much-awaited event of the year – Joint ITE-SoCal/OCTEC Job fair and Student Presentation Night on May 16th at 5:30 p.m. at the Knott's Berry Farm Hotel in Buena Park.

The lunch meeting was followed by a tour of the Traffic Management Center, which had more than 40 attendees. Traffic & Lighting Division – Traffic Systems Section Head, Mr. Marty Amundson, briefed the attendees on the signal monitoring tasks performed at the TMC, and discussed the upcoming remodeling of the TMC area.

In Remembrance of Frank Barnes

Henry Servin, PE, TE (City of Santa Monica)



Frank Barnes

(Photo Credit: City of Santa Monica)

I can't say enough great things about this man. He was a mentor to many in this organization. He was a "walking encyclopedia" and was "as sharp as a tack". Many times, when a staff person was assigned to conduct a City facility refurbishment or needed to find an archived plan, they would ask, and he would have an answer.

A Korean War veteran, Frank entered government service in the 50's, worked for LADOT from the 60's until 1980, then joined the Santa Monica team. He obtained his Master's in Civil Engineering from UCLA in 1968; and

fully utilized his knowledge, skills, and experience in service to this community. He worked for several City departments, including the Airport, Big Blue Bus, and eventually the Traffic Management Division. He has been the backbone of that department as he tutored many planners, analysts, and engineers on project delivery and good safe design.

He was a fully deputized reserve Deputy Sheriff Officer and served in that capacity through 2017.

He has been a "staple" of the Southern California Section of the Institute of Transportation Engineers for over five decades. He was presented the ITE Classic Engineer Award in 2017.

His plan was to never retire. Frank cared deeply not only about the work, but also the people. He hosted an annual holiday party for his colleagues for over 25 years in a row; and was always asking us about our spouses, partners and children. This extended to members of the public as well, and there are countless people in the community who developed strong bonds with him.

We will dearly miss him and his contributions to the City and residents of Santa Monica.

10 Transportation Takeaways from the Route Fifty Tech Roadshow in San Jose

David M. Schwegel, PE (Precision Civil Engineering)

On Wednesday, April 4, the Route Fifty nonprofit (www.RouteFifty.com) made their first Tech Roadshow stop at the SP2 Communal Bar in San Jose. This two-hour event featured Mayor Sam Liccardo; Chief Innovation Officers from San Jose, San Francisco, and Palo Alto; a session presented by event underwriter Veritas; and representatives from the nonprofits Ride Along, City Innovate, and Code for America. Sessions were moderated by Mitch Herckis, Senior Director of Programs for the daily *Route Fifty* e-Newsletter. Constance Sayers, President of the Government Executive Media Group served as Master of Ceremonies. Route 50 aired the Smart Cities Competition under the leadership of Former US Transportation Secretary Anthony Foxx. Here are 10 takeaways from this event and recent *Route 50* e-Newsletters:

1. Maintaining the status quo is far more damaging than experiencing "growing pains" and criticism for being innovative. Therefore, embrace innovation in the development and implementation of a "Smart City" vision.

2. While Washington DC may occasionally be perceived as lacking action on policies that encourage innovation, now is the time for municipalities to innovate “full-speed ahead”.



San Jose Mayor Sam Liccardo
(Photo Credit: David Schwegel)

3. While technology has lifted lots of citizens out of poverty, and the San Francisco Bay Area and Silicon Valley regions are highly regarded among the wealthiest in California; the “wealth gap” in both regions continues to grow quickly, and more citizens are “getting left behind”.
4. One area in which many citizens are “getting left behind” is in the “digital divide”. This “divide” is enormous even in innovation hubs like San Jose where 23% of households lack access to broadband at home. Transportation professionals are encouraged to explore opportunities for using the rights-of-ways to lay fiber-optic cable much like the California High-Speed Rail Authority (www.hsr.ca.gov) is currently doing in the Central Valley.
5. When broadband companies do business in San Jose, they are expected to do their part to “bridge the digital divide”.
6. In “Smart City” applications, Transportation Professionals are encouraged to maximize the carrying capacity of transportation systems in terms of passengers per hour per square footage of right of way consumed. Applications should be explored in urban environments that both capitalize on this metric; and offer a “complete transportation

system” www.ushsr.com with numerous “transportation choices”.

7. Discussions are underway about more expedient and “mutually-beneficial” procurement avenues that are not so heavily reliant on cumbersome RFP processes. This will encourage significantly increased engagement from the “new breed of entrepreneurs” who are “mission driven” and passionate about “making cities better”.
8. The “Code for America” organization devises innovative solutions to real life problems such as deploying IT professionals to shelters during natural disasters such as Hurricane Harvey, to provide real time updates on shelter availability. A Code for America Summit takes place at the Oakland Marriott City Center on May 30th and June 1st. Engagement from the Transportation Engineering community is strongly encouraged. For more information, go to: <http://www.cvent.com/events/code-for-america-summit-2018/event-summary-e12d85b157b94d69b80d8911cc641d36.aspx?RefID=cfa>
9. An article in an early April e-Newsletter posed the debate on whether video detection systems capable of acquiring real time traffic counts in the City of Chandler, Arizona reduced or increased the need for a robust Traffic Engineering Department.
10. An article in the April 30th e-Newsletter ranked Denver and Seattle within the top five cities experiencing the most employment growth, and San Francisco and Los Angeles within the top five cities with the largest gap between skills taught in school and skills needed in the labor market. This underscores the need for robust investments in state-of-the-art mass transit systems and top-notch academic institutions.

If you would like to submit a technical article for the ITE SoCal Newsletter, please contact David Schwegel (davidmschwegel1@gmail.com) or Dina Saleh (SalehD@metro.net).

Career Opportunities

The City of Riverside is accepting applications for the position of **Assistant Engineer** to fill one (1) vacancy in the **Traffic Engineering Division** of the **Public Works Department**. To apply, go to www.riversideca.gov/jobs.

Update from FHWA*Jesse Glazer, PE, FHWA Liaison*

Here are two Webinars on BUILD Transportation Grants:

1. How to Compete for BUILD Transportation Grants, Thursday, May 24, 11:00 am to 1:00 pm PST
2. Preparing a Benefit Cost Analysis (BCA) for a BUILD Application, Thursday, May 31, 11:00 am to 1:00 pm

Registration:

<https://www.transportation.gov/BUILDgrants/outreach>

For more information on the latest developments at USDOT including registering for webinars, go to <https://www.transportation.gov>.

Here are two additional Webinars of interest:

1. USDOT National Dialog on Highway Automation, Tuesday, May 8, 10:00 to 11:30 am PST:
https://www.pcb.its.dot.gov/t3/s180508_FHWA_National_Dialogue_on_Highway_Automation.asp
2. USDOT Grant Program (ATCMTD) Introductory Webinar, Wednesday, May 23, 10:00 to 11:30 am PST:
https://connectdotcgpublish1.connectsolutions.com/content/connect/c1/7/en/events/event/shared/1103886568/event_registration.html?sco-id=1188721143& charset=utf-8

Upcoming ITE Webinars

Elements of Geometric Design (Module 4 of ITE's PTOE Refresher Course), May 8, 12:00 – 1:30 p.m. PT



Traffic Control Devices (Module 5 of ITE's PTOE Refresher Course), May 15, 9:00 a.m. – 12:00 p.m. PT

Traffic Safety (Module 6 of ITE's PTOE Refresher Course), May 22, 12:00 – 1:30 p.m. PT

Uncontrolled Pedestrian Crossings, May 24, 11:30 a.m. to 1:00 p.m. PT

Check out the [ITE Learning Hub](http://www.ite.org/learninghub) for a listing of webinars.

Update from ITE Headquarters

*Marianne Saglam
(ITE Communications and Media Senior Director)*



Check out these hot topics that are trending at ITE:

1. Road to Zero Coalition Safe System Innovation Grant (April 24, 2018):
<http://library.ite.org/pub/afecf8ff-cd9f-a832-e4bb-8706ee757a20>
2. Traffic Signal Benchmarking Self-Assessment:
<https://www.tsbenchmarking.org>
3. ITE Lands' End ITE Merchandise:
<https://business.landsend.com/store/ite/>
4. Smart Communities Quick Bites:
<http://www.ite.org/smartcommunities/default.asp>
5. ITE Annual Meeting in Minneapolis (also see promotional video on YouTube:
http://ecommerce.ite.org/imis/iCommerce/Events/Event_Display.aspx?EventKey=ITE2018AM&WebsiteKey=d5326f96-5db7-43ca-89dc-c6ef0daae20e
6. Call for Abstracts: National Rural ITS and ITS Arizona Annual Conference & Exhibit:
<https://ite-nrits.secure-platform.com/a>
7. Unsignalized Intersection Improvement Guide (UIIG): <http://www.ite.org/uiig/>



ITE-SoCal Elections 2018 - 2019
Sowmya Chandrasekhar, ITE-SoCal Secretary

Hello SoCal Section! It's election season; that means, it is time to choose your ITE SoCal Section Board. We have two great candidates who have served the SoCal Section as your Co-Student Chapter Liaison Chair/Professional Activities Chair and Co-Newsletter Chair. Hassan Ahmed and Dina Saleh are excited for the opportunity to serve our Section further. Their candidate statements can be found below. You will receive an email with voting ballots for all positions on the SoCal Board by May 14, 2018. You will have 30 days to vote with voting ending on June 23, 2018 at 12:00 PM. The winners will be announced on June 13, 2018 at our Annual Business Meeting, and the new Board will be sworn in at the end of the meeting. Please note that you will receive the voting ballot only if you are a current ITE member having paid your membership dues through 2018 and beyond. If you have any questions for our candidates, please reach out to them. Please show your support for our candidates and vote!

Hassan Ahmed, TE
hahmed@kittelton.com
 Kittelson & Associates, Inc.
 ITE SoCal Section Treasurer Candidate



It is truly an honor to be nominated for the Southern California Section Treasurer. My involvement with this great organization began back when I served as President of the UC Irvine student chapter. Since graduating, I have had the pleasure of bridging the gap between the professionals and the students as the Student Liaison Chair and currently serve as the Professional Activities Co-Chair. I was also selected for the LeadershipITE program in 2016.

Throughout the years, I have had the honor of mentoring students interested in pursuing a career in transportation and have organized countless events including the annual Traffic Bowl and Student Presentation Night. With the help of my Professional Activities Co-Chair, I have started a new tradition for our section, where we provide our members with a new avenue to network with each other through monthly happy hours that alternate between Los Angeles and Orange County. We are currently working on a Young Member Initiative (YMI), which we plan to introduce before the end of this year.

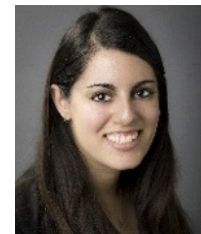
Through the LeadershipITE program, I had the opportunity to work with other leaders in the industry to identify challenges we face as transportation professionals and as an organization. Our group worked closely with the International Board of Directors to identify strategies to improve ITE's overall member experience. As part of our Section's leadership team, I hope to bring the knowledge from this experience back to our Section and continue to implement new strategies to improve member resources.

The following list summarizes some of my goals if elected Treasurer for the So Cal Section:

- Ensure fiscal responsibility and identify opportunities to reduce costs for members to attend events
- Engage the next generation of transportation professionals and promote increased involvement in the Section by the younger members through programs like YMI
- Work with active Public Agency members to promote and increase Public Agency involvement
- Utilize my LeadershipITE experience and connections to improve communication with Western District and International ITE

Thank you for taking the time to read my candidate statement. It would certainly be an honor to serve as the Southern California Section Treasurer and I certainly hope to have your vote. I look forward to continuing to serve our Section.

Dina Saleh
SalehD@metro.net
 LA Metro
 ITE SoCal Section Treasurer Candidate



A great leader must aim high and value their team members. I am honored and eager to be nominated as your ITE SoCal Board Treasurer, a leadership role I have admired and respected for many years. My interest in ITE and the SoCal Section began during my undergraduate career at UC Irvine and has grown ever since. I became an ITE member in 2013, and I have been lucky enough to experience the great growth and strength of our transportation community. The SoCal Section gave me the opportunity to learn about professional aspects of the transportation field following graduation. I will always be thankful for the support created by the ITE Community. In 2016, my involvement with the SoCal Section grew, as I accepted the responsibility to serve as Co-Newsletter Editor. From this role, I gained the perspective of the inner workings of the SoCal Section and the opportunity to learn from the talented Section members who submit articles for publication. I am proud of the content and camaraderie that the SoCal Section has cultivated throughout the past years. I look forward to deepening and extending this professional relationship as the ITE SoCal Section Treasurer.

As your Treasurer, I will utilize the great foundation created by previous Board members to promote the young professional involvement in the SoCal Section. In addition to serving as the Section's Co-Newsletter Editor, I currently serve on the board of the ITSCA Young Professionals Group (YPG). This YPG organization gives young professionals a voice, while also providing opportunities to make connections and explore emerging technical advances within the community. I value the diverse perspectives I have experienced through this position. I plan to engage young professionals through both ITSCA and ITE to continue the legacy of professional transportation organizations in Southern California.

I encourage the ITE SoCal Section Board to continue the invaluable relationships with our sponsors and educational leaders. Our generous sponsors not only help the SoCal Section to operate more smoothly, their generous monetary donations directly benefit our Student Chapters as an investment in the future of our great profession. I was fortunate enough to be part of the UC Irvine team that took first place at the 2014 Student Presentation Night. The funds received allowed students to attend the ITE Annual Meeting that followed.

It would be a great honor and privilege to serve on the ITE SoCal Board as your Treasurer. I would genuinely appreciate your support and vote to serve our Section. Thank you!

**WE UNDERSTAND
TRAFFIC.**

**OFFICES THROUGHOUT THE COUNTRY
FOR NATIONWIDE DATA COLLECTION**

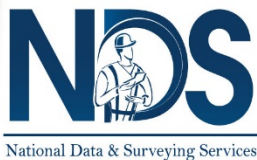
28 YEARS OF SUCCESSFUL CORPORATE OPERATIONS

**FULL SERVICE TRAFFIC, TRANSIT AND GPS/GIS
DATA COLLECTION COMPANY**

SERVICES INCLUDE

- Turning Movement Counts
- Pedestrian & Bicycle Counts
- ADT Counts (Volume, Speed, Class)
- Radar Spot Speed Studies
- Video Surveillance
- Drone Surveillance
- Bluetooth/Wifi Data Collection
- Wavetronix Wave Radar
- OD Studies
- GPS/GIS Asset Inventory
- Special Studies
- Custom Study Development

NDS PROVIDES CUSTOMIZED DELIVERABLES



National Data & Surveying Services

(877) 861-9132 / www.ndsdata.com / orders@ndsdata.com

More Info at:

**[http://www.ite.org/
annualmeeting/](http://www.ite.org/annualmeeting/)**

ite



**Minneapolis 18
Annual Meeting and Exhibit
August 20 - 23**

ITE - Southern California Section

OC Happy Hour



Sign up your team
via the link provided
in the email by
May 25, 2018

Rules:

- Doubles only
- 21 point game
- Serve changes
every five serves

Food and beverages
provided by:



Winning team
will receive a
\$100 Amazon
giftcard courtesy
of SoCal ITE!

MAY 31 2018

**KOA - ORANGE OFFICE
2141 W. ORANGEWOOD
ORANGE, CA 92868**

5:30 PM - 8:00 PM

More Info at:

<https://www.natmec.org/>

NATMEC
NATIONAL TRAVEL MONITORING
EXPOSITION AND CONFERENCE



**2018
CONFERENCE**

**IRVINE, CA
JUNE 10 - 13**



IMPROVING TRAFFIC DATA COLLECTION, ANALYSIS AND USE **>>**



CONCERT ATMS

Advanced Traffic
Management System

SCOOT

Real-Time Adaptive Control

SIEMENS RUGGEDCOM

Network Communications
Solutions

SEPAC

Advanced Local Controller
Software

WESTERN SYSTEMS CABINETS

Custom-Manufactured
Cabinets

TKH

Video Surveillance
Solutions

TACTICS

Central Management
System

CONNECTED VEHICLES

V2I Solutions

We've got you covered.

425.438.1133 | info@westernsystems-inc.com

what makes a smart city?

Harnessing 35 terabytes of transportation
data for safer and more efficient mobility.



Kimley»Horn

Quality and personalized service you would expect from a local company, with the resources of a nationally-ranked engineering firm. We provide award-winning planning and design services for:

- ITS
- Traffic Signal Systems
- Highway/Roadway
- Transit
- Traffic Operations
- Transportation
- Land Development
- Water Resources
- Environmental
- Aviation

SAN DIEGO

401 B St.
Suite 600
San Diego, CA
92101
619-234-9411

LOS ANGELES

660 South Figueroa St.
Suite 2050
Los Angeles, CA
90017
213-261-4040

ORANGE

765 The City Drive
Suite 200
Orange, CA
92868
714-939-1030

www.kimley-horn.com



Trafficware Cloud
Signal Performance Measures



Connected Vehicle
Smart City V2I



Synchro 10
plus SimTraffic
Signal Timing & Analysis Software



ATMS.now
Central Management Platform



Cabinets & Controllers
Legendary Quality



POD
Wireless Vehicle Detection System



To learn more about Trafficware's products visit www.Trafficware.com or call 281-269-6512

Sense it Better

Sensor Technology for Every Scenario

Video Detection – Vision™ | Latest Innovations, Best-in-Class Performance

Radar Detection – AccuScan® | Highly Accurate Performance

In-Ground Wireless Detection – AccuSense® | Long-Term, Reliable Performance

Moving Traffic Forward.

econolite.com/Detection



ORNAMENTAL MUNICIPAL STRUCTURES, TRAFFIC SIGNALS, STREET LIGHTING & AMENITIES

Colorado Blvd., Santa Monica



(949) 276-8850

WWW.SOUTHCOSTLIGHTING.COM

(MEMBER ITE, OCTEC, IESNA, ASLA)



OCTEC

P R E S E N T

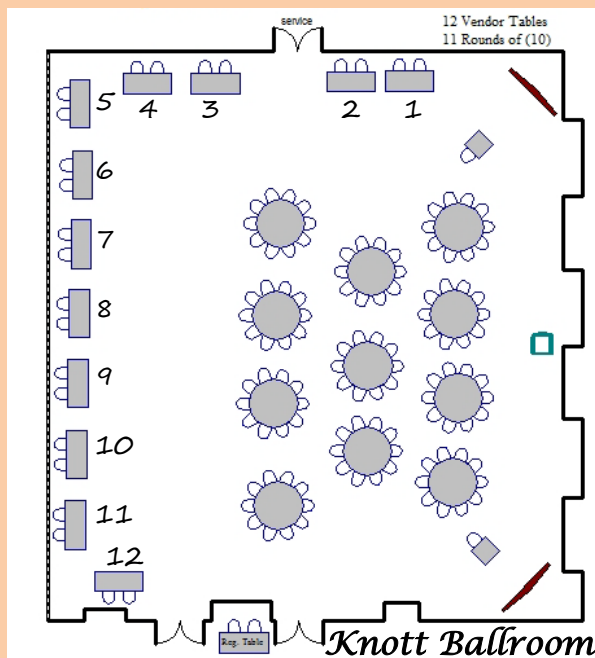
Job Fair & Student Presentation Night
at

Knott's Berry Farm Hotel

7675 Crescent Avenue
Buena Park, CA 90620

WEDNESDAY
05.16.2017

3RD ANNUAL ITE-SOCAL/OCTEC JOB FAIR & STUDENT PRESENTATION NIGHT



Thank you to our Event Sponsor:



Thank you to our Booth Sponsors:



Job Fair Time: 5:30 PM – 6:30 PM

Tentative Event Schedule:

- 5:00 PM – Arrive for Booth Set-Up
- 5:30 PM – Check-In/Job Fair
- 6:30 PM – Call to Order
- 6:45 PM – Introductions/Announcements
- 7:00 PM – Student Presentations
(8 minutes each plus 2 minutes Q&A)
- 8:45 PM – Awards
- 9:00 PM – Meeting Adjourned

Booth Assignments:

1. Advantec Consulting Engineers
2. Albert Grover & Associates
3. FPL & Associates
4. Gibson Transportation Consulting
5. HDR
6. Iteris
7. Jacobs
8. Kimley-Horn & Associates
9. LA Metro
10. LADOT
11. RailPros
12. Trafficware

Participating Universities:

- ♦ Cal Poly Pomona ♦ CSU Fullerton
- ♦ CSU Long Beach ♦ CSU Los Angeles
- ♦ UCI ♦ UCLA ♦ USC

Note:

- Job Fair is FREE to attend – Registration is a MUST; use Eventbrite Link below!
- Registering for dinner is mandatory in order to attend the presentations.

Register at https://2018_ite_socal_octec_student_night.eventbrite.com

REGISTRATION ENDS AT 5 PM FRIDAY 5/11

Questions? Contact src@iteris.com

Job Fair FREE! | Regular Dinner \$35 | Students Dinner \$20 | Life Members Free!


2017-2018 CALENDAR

INSTITUTE OF TRANSPORTATION ENGINEERS
SOUTHERN CALIFORNIA SECTION



<p>AUGUST 2017</p> <p>ITE Annual Steak Fry Wed. Aug 23, 2017 Dinner – 5:30pm</p> <p>Police Academy Rock Garden, Los Angeles</p>	<p>SEPTEMBER</p> <p>Regular ITE Meeting Wed. Sept 27, 2017 Lunch – 11:30am</p> <p>Monterey Hill Restaurant, Monterey Park</p>	<p>OCTOBER</p> <p>Joint Meeting with OCTEC Thurs. Oct 26, 2017 Lunch – 11:30am</p> <p>Orange County Mining Company, Orange</p>
<p>NOVEMBER</p> <p>Joint Meeting with Riverside- San Bernardino Section Wed. Nov 15, 2017 Lunch – 11:30am</p> <p>The Restaurant at Kellogg Ranch, Cal Poly Pomona</p>	<p>DECEMBER</p> <p>Holiday Mixer with RSB ITE & OCTEC Wed. Dec 6, 2017 Appetizers – 5:30pm</p> <p>Los Coyotes Country Club, Buena Park</p>	
<p>JANUARY 2018</p> <p>Joint Meeting with City Traffic Engineers Wed. Jan 17, 2018 Lunch – 11:30am</p> <p>Monterey Hill Restaurant, Monterey Park</p>	<p>FEBRUARY</p> <p>Joint Meeting with Central Coast Section Revised Tues. Feb 13, 2018 Lunch – 11:30am</p> <p>City of Thousand Oaks Municipal Service Center</p>	<p>MARCH</p> <p>Joint Workshop with RSBITE and ITE San Diego Fri. March 9, 2018 Revised 9:00a – 1:00p Workshop, 12:00p Lunch Revised Plaza de Magdalena, San Juan Capistrano</p>
<p>APRIL</p> <p>Regular ITE Meeting Wed. April 11, 2018 Lunch – 11:30am</p> <p>Revised Los Angeles County Public Works, Alhambra</p>	<p>MAY</p> <p>Student Chapter Night Co-sponsored by OCTEC Wed. May 16, 2018 5:30p Student Job Fair, 6:30p Dinner</p> <p>Knott's Berry Farm Resort Hotel, Buena Park</p>	<p>JUNE</p> <p>Mini-Workshop/Annual Business & Joint Meeting with ITS SoCal Wed. June 13, 2018 8:30a – 12:00p Workshop, 12:00p Lunch, 1:00p Business</p> <p>Monterey Hill Restaurant, Monterey Park</p>

NOTE: Some information is subject to change. Last Updated – February 26, 2018.



UCI ITE STUDENT CHAPTER 6TH ANNUAL MULTI-VENDOR CONNECTED VEHICLE TECHNOLOGY DEPLOYMENT: PRESENTATION NIGHT & DINNER MAY 9TH, 2018

Location: *UCI Student Center, Pacific Ballroom C*

Time: 6-9 PM

\$10 for Students & \$30 for Guests

Cash or check at door

Parking: \$2/ hr at the Student Center Parking Structure

RSVP BY May 4TH

<https://goo.gl/forms/H0uZY7mbav1NcqPu1>

Questions? itechapter.uci@gmail.com

THE UCI ITE STUDENT CHAPTER IS SEEKING DONATIONS TO HELP FUND FUTURE ITE PROJECTS FOR OUR UNDERGRADUATE STUDENTS. IF YOU OR YOUR COMPANY WISH TO HELP SUSTAIN OUR CHAPTER. PLEASE KINDLY INCLUDE THE AMOUNT YOU WILL DONATE IN YOUR RSVP. WE WILL GLADLY AND PROMINENTLY RECOGNIZE THIS SUPPORT (BY NAME AND/ OR COMPANY LOGO).



GIANCARLO GANDDINI

PE, PTP

candidate for
ITE Western District
Secretary/Treasurer

ITE EXPERIENCE

Board Member, ITE Southern California Section (2013-2017)

- Served as Secretary/Treasurer, Vice President, President, and Past President.
- Established mini-job fair to maintain scholarship funding and connect students with traffic engineering/planning firms.
- Developed orientation documents to facilitate Section Officer transition process.

Technical Programs Co-Chair

- Western District Annual Meeting - Hawaii (Upcoming 2020)

California SB 743 Task Force

- ITE SoCal Representative (2016)

Student Chapter Liaison, ITE Southern California Section (2010-2012)

- Helped establish first annual SoCal Section Student Traffic Bowl competition.

Young Engineer of the Year

- ITE Southern California Section (2012)



ITE Southern California Past Presidents



VISION

Increase Member Engagement

Develop sponsorship opportunities to help offset registration and travel costs for individuals from public agencies or private firms with limited resources.

Increase Access to Technical Content

Explore the potential to live-stream Annual Meeting technical sessions for members who cannot attend in person.

I believe the ingenuity and knowledge base of our members are ITE's greatest resources. Together, we can make a difference in our communities and keep moving forward.

Support Student & Young Professional Initiatives

Continue promoting the Student Endowment Fund and incentivize more professional engagement in the Student Leadership Summit and Student/Young Professionals program at District Meetings.

Return on Investment

Maintain sound finances and ensure any extra income is directed towards initiatives that return value to our members.



g4ite.org



[linkedin.com/in/ganddini](https://www.linkedin.com/in/ganddini)

May 1, 2018

Hi Southern California Section,

In 2017, the Western District [Student Endowment Fund](#) expanded its Student Initiatives Program to increase student support from \$15,000 to \$18,000 annually. New initiatives included four Regional Travel Scholarships and a sixth Data Collection Fund project.

The full list of funded Student Initiatives includes:

- Regional Travel Scholarships to attend the Western District Annual Meeting (\$500/student for 4 students)
- Support for the Student Leadership Summit (\$1,000)
- Funding for the Data Collection Fund (\$1,000/project for 6 projects)
- Funding (\$1,500) and awards (\$300) for the James H. Kell competition held at the Western District Annual Meeting
- Support of travel for our winning Student Traffic Bowl team to the ITE International Meeting (\$1,000)
- Support of travel to the ITE International Meeting if a Western District student chapter wins the International Student Chapter Award (\$1,000)
- Awards for student chapter annual reports (\$100/report for 25 reports)
- Awards for our student paper winner (\$500), outstanding graduate (\$500) and undergraduate (\$500) students, and outstanding student chapter (\$1,000) at the Western District Annual Meeting
- Sponsoring special events for students and professionals (\$250)

The initial \$500,000 goal for the Endowment Fund was intended to support the District's established Student Initiatives. The recent expansion of the program was made possible through seed money provided by the Western District Board to support the Regional Travel Scholarships and an additional data collection project for the first three years. However, in order to ensure the sustainability of these new initiatives as well as further expansion of the program, the Endowment Fund still needs support from the District membership.

This year, eight students applied for four Regional Travel Scholarships to attend the Annual Meeting in Keystone, and 13 student chapters applied for six projects in the Western District's Data Collection Fund. These numbers alone exhibit the excitement that the students have for ITE. On a bimonthly basis, student chapters are sharing with the District membership about what excites them about ITE and the transportation field and the ways in which the Endowment Fund has benefited their chapters. You can hear directly from the students about the impact that ITE has had on their college experiences through the [Student Endowment Fund spotlights](#).

When you make your contributions to the Endowment Fund, you will be prompted to designate your contribution for either:

1. The General Fund, which includes all of the Student Initiatives supported by the Endowment Fund, or
2. The Regional Travel Scholarship, which helps to activate the scholarship for your chosen region.

Two awards are given at the Annual Meeting to recognize Sections or Chapters with the highest overall contribution and with the highest contribution per member during the prior year, so all of these contributions will be added to the totals for your Sections or Chapters. All contributions are tax-deductible.

I hope that you continue on this journey with the Student Endowment Fund as we expand our Student Initiatives Program to support the next generation of transportation professionals.

Thanks for your consideration,
Kimberly Leung
Endowment Fund Committee Chair