



INSTITUTE OF TRANSPORTATION ENGINEERS

SOUTHERN CALIFORNIA SECTION

NEWSLETTER

2014 – 2015, Issue No. 7

April 2015

President's Message

Neelam Dorman, TE



This year has been moving quickly, we are already in Spring and Summer is fast approaching. Our Board and Chairs have been working hard this year and would appreciate any input from our membership to better serve you in the next year. Feel free to reach out to any of our Board members and let us know how we and our Chairs have done so far this year.

From our Board, thank you to our March Meeting speakers: Theresa Dau-Ngo (PoLB), Christina Byrne (OCTA), Stan Glowacki (SANDAG), Sam Esquenazi (Caltrans D7), and Natalie Meeks (City of Anaheim). Thank you also to the San Diego Section for a great meeting. We had a great turnout and a wonderful meeting.

Our April meeting will be a regular meeting back at our Monterey Park location and May is full of events. Please mark your calendars:

- UCI Student Presentation & Alumni Networking Night – May 6th
- OCTEC/ITE Golf Tournament – May 8th
- ITE/OCTEC Student Night – May 20th

Please also note the following Western District Young Professional Achievement and Employer Achievement awards are May 1st (for more information: <http://westernite.org/aboutus/awards/>). Early registration for the District Annual Meeting ends April 15th, so get your taxes in and register for the meeting!

Please remember to vote for the ITE Western District and ITE International Elections. Information on candidates for Western District offices and the election process can be found [here](#).

Next Meeting

**Wednesday, April 15,
11:30 AM – 1:30 PM
ITE Southern California Section
Meeting**

***"Developing Yellow Time
Intervals for Left-Turn
Movements for the City of
Santa Clarita"***

Andrew Yi, P.E., City Traffic
Engineer, City of Santa Clarita;
Adam Dankberg, P.E., Associate,
Kimley-Horn and Associates

Monterey Hill Restaurant,
Monterey Park

REGISTER [HERE!](#)

Brief Look Ahead

April 2015

Thu 9th, OCTEC Spring Social Mixer, Dave & Busters, Orange (see flyer)
Tue 21st - Thu 23rd, US High Speed Rail Association Conference, Washington DC - www.ushsr.com
Mon 27th, California Transportation Choices Summit, Embassy Suites, Sacramento, California - www.transformca.org

May 2015

Fri 8th – OCTEC/ITE SoCal Golf Tournament, Green River Golf Club, Corona, California (see flyer)
Wed 20th – ITE SoCal/OCTEC Student Presentations Night

June 2015

Wed 17th, ITE SoCal/ITS SoCal Mini Workshop & ITE SoCal Annual Business Meeting

July 2015

Sun 19th – Wed 22nd, Western District Annual Meeting, Planet Hollywood Resort, Las Vegas, Nevada - www.lvite2015.com

August 2015

Sun 2nd – Wed 5th, ITE 2015 Annual Meeting and Exhibit, Westin Diplomat, Hollywood, Florida - www.ite.org

ITE Southern California Section
www.socalite.org

2014-2015 Southern California Section Officers

President

Neelam Dorman
URS Corporation
neelam.dorman@aecom.com

**Vice President**

Giancarlo Ganddini
RBF, Michael Baker Int'l
giancarlo.ganddini@mbakerintl.com

**Secretary**

Jay Dinkins
City of Santa Monica
jay.dinkins@smgov.net

**Treasurer**

Dean Lehman
LA County Public Works
dlehman@dpw.lacounty.gov

**First Past President**

Sri Chakravarthy
Kimley-Horn & Associates
srikanth.chakravarth@kimley-horn.com

**Second Past President**

Andrew Maximous
City of Santa Monica
andrew.maximous@smgov.net



2014-2015 Southern California Section Chairs

Sponsorship Coordinator

Melissa Countryman
City of Rancho Palos Verdes
melissac@rpv.com

**Scribes**

Panayiota Georgalis
Kimley-Horn & Associates
panayiota.georgalis@kimley-horn.com

**Industry Coordinator**

Janna McKhann
NexTech Systems, Inc.
jmckhann@nextechsystemsinc.com

Clinton Quan

City of Los Angeles DOT
clinton.quan@lacity.org

**Legislative Analyst**

Martin Varona
UCLA
mvarona360@gmail.com

**Section Administrator**

Erik Zandvliet
City of Manhattan Beach
ezandvliet@citymb.info

**Membership Coordinator**

Amy Kim
URS Corporation
amy.kim@aecom.com

**FTA/FHWA Liaison**

Lawrence (Jesse) Glazer
FHWA/FTA LA Metro Office
Jesse.Glazer@dot.gov

**Newsletter Editors**

David Schwegel
Precision Civil Engineering
davidmschwegel1@gmail.com

**Student Chapter Liaisons**

Hassan Ahmed
Gibson Transportation
hahmed@gibsontrans.com

**Sowmya Chandrasekhar**

Iteris, Inc.
scx@iteris.com

**Technical Coordinator**

Bernard Li
Iteris, Inc.
bkl@iteris.com

**Professional Activities Chairs**

Vikas Sharma
Kimley-Horn & Associates
vikas.sharma@kimley-horn.com

**Webmaster Chairs**

Saly Heng
UCLA
saly.heng@kimley-horn.com

**Eric Dunlap**

LA County Public Works
edunlap@dpw.lacounty.gov



Tiffany Huang
Kimley-Horn & Associates
tiffany.huang@kimley-horn.com



Scribe Report

Panayiota Georgalis, ITE SoCal Scribe

The Institute of Transportation Engineers Southern California Section (ITE SoCal) held a joint workshop with the San Diego Section on Friday, March 20, 2015 at the El Adobe De Capistrano Restaurant in San Juan Capistrano. There was a great turnout, with members from both chapters being well represented in addition to the student chapters from Cal Poly Pomona and San Diego State University. The workshop included a number of insightful presentations that captivated the audience's attention and triggered thoughtful discussions and questions.



Figure 1: Attendees Watch a Workshop Presentation

Theresa Dau-Ngo, Transportation Development Manager, Port of Long Beach, kicked off the event with a presentation on the beach improvement plan and discussion on upgrading the harbor to withstand the mobility of larger container ships.

The second presenter, **Christina Byrne**, Manager at Capital Projects outreach, Orange County Transportation Authority (OCTA), shared information on how to integrate stakeholders through multiple communication media (printed material, email, social media) as they work together toward mutually beneficial solutions. She provided advice on community outreach and discussed techniques for keeping the public engaged as well as opening dialogue in all project delivery phases and continuous interaction - particularly through the construction phases. Her work on the West County Connector Project depicted all these aspects and included customized maps in Google to depict construction and detour routes, and continuously updated message displays and detour signage. For this particular project, construction help lines and websites were incorporated in addition to community presentations, door-to-door visits, construction highlight notifications, and public service announcements. Literature regarding the construction and construction methods was made readily available, so that the community could be aware of the work that was taking place.



Figure 2: Christine Byrne Discusses Community Outreach

The third presenter, **Stan Glowacki**, ITS Operations Manager, San Diego Association of Governments (SANDAG), elaborated on the modern mobile application being incorporated by SANDAG and the I-15 Corridor Project in San Diego. The program is a mobile app called "511 San Diego" for San Diego displaying a number of overlays for each person to customize themselves, based on interests in Google's bus map, Caltrans Feed (refreshes every 3 minutes), incidents (by CHP, cities, or Caltrans, and validated by Caltrans), toll information (South Bay 125, I-15), road work, or even a "cutting edge" forecasting feature based on historical traffic patterns and micro-simulations. In the event of an incident, the driver would be notified within 10 minutes of the event and directed towards an alternative route. The app utilizes a "text to speak" function, so that drivers may remain hands-free and safe in their commutes, and receive information for up to a mile ahead of their location. Push notifications for real time are also available, and the user may select a timeframe for which they would like to receive their notifications, for instance - every Monday-Friday 5pm-6pm. Better yet, the app is available in the app store for any smart phone device! For more information, please visit www.511SD.com.



Figure 3: Stan Glowacki Discusses the I-15 Corridor Project

The fourth presenter, **San Esquenazi**, from Caltrans District 7, gave a presentation on the Connected Corridors I-210 Pilot Project, and addressed transportation demand and the cost benefit of ITS providing a return on investment of 20-to-1. The focus of this project is system management and real time traffic management in multimodal and multi-jurisdiction scenarios. Through collaborative effects, research is to be developed and tested as a framework for future corridors. Currently, incident congestion affects all modes, and creates unsafe situations and grave delays, but ramp metering and signal timing can alleviate the impact.

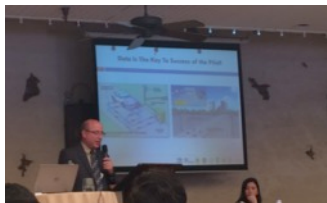


Figure 4: San Esquenazi Presents "The Connected Corridor Pilot"

For the final presentation, **Natalie Meeks**, City of Anaheim Public Works Director, gave an enlightening look into the plan and construction of the Anaheim Regional Transportation Intermodal Center (ARTIC), the transportation hub of Anaheim. With the Honda Center, Angel's Stadium, and the Disneyland Resort, these elements draw in 25 million visitors, 1,000 employees, and 25,000 residents. Tourism is expected to increase in the upcoming years. The ARTIC is designed to meet needs of the traveling public for the next 50 years. In order to serve this demand, ARTIC provides access to Orange County Transportation Authority (OCTA) buses, Anaheim Transportation Network (ATN) buses, Greyhound, Coach USA, Metrolink, Amtrak, shuttles, other buses, taxis, and bicycles all in one location. Its functionality, sustainability, and iconic infrastructure characteristics are unparalleled.



Figure 5: Natalie Meeks Presents "ARTIC-Gateway to the Future"

The presentations concluded with **Zaki Mustafa**, Past International ITE President, introducing this year's candidates: Jimmy H.C. Lin from KOA Corporation (Monterey Park) and Shawn J. Leight from CBB Transportation Engineers & Planners (St. Louis).

Lastly, thank you to Econolite, the sponsor for the workshop and their wonderful showcase of the evolution of their products.

Legislative Analysis

Martin Varona, ITE SoCal Legislative Analyst

AB 1171: This bill would authorize regional transportation agencies to use the Construction Manager/General Contractor project delivery method to design and construct certain projects on expressways that are not on the state highway system if the projects are developed in accordance with an expenditure plan approved by voters as of January 1, 2014.

AB 1265: This bill would extend indefinitely the authorization for Caltrans and regional transportation agencies to enter into comprehensive development lease agreements with public and private entities for certain transportation projects that may charge certain users of those projects tolls and user fees.

ACA 4: This bill would state that the imposition, extension, or increase of a special tax by a local government for the purpose of providing funding for local transportation projects requires the approval of 55% of its voters voting on the proposition instead of the current two-thirds majority.

This early in the session, many spot bills are appearing that could potentially grow into something significant later on in the year. Some spot bills include:

AB 1096: A bill that is working to clearly define the term "motorized bicycle".

AB 208: This bill looks to build upon the "Three Feet for Safety" Act requiring motorists to leave a three-foot safety clearance for bicycles.

How is the USDOT Encouraging Transportation Discussions?

David M. Schweigel, PE

The US Department of Transportation (USDOT), under the leadership of Transportation Secretary Anthony Foxx, has prepared both "The Blue Paper" (talking points) and "Beyond Traffic 2045: Trends and Choices" (draft report) publications to: (1) educate the public on the realities of the nation's transportation system, (2) encourage candid discussions on these realities, and (3) inspire action among decision makers. Discussion topics center around these five themes:

1. **Contrasts:** Maintain the status quo. "In 2045, Omaha is the new L.A." in traffic congestion. A businesswoman rail commuter in Long Island "wonders not just when she will get to work, but if she will get there at all." Asian electric buses never refuel "because they receive their power wirelessly." European driverless cars are so safe that "car crashes are as much a part of the past as horse-and-buggy accidents."
2. **Investment:** The US invests less of its GDP on transportation infrastructure than many third world countries.
3. **Growth:** Will Congress pass a new long-term transportation-funding source by May 2015, so that our nation can develop a state-of-the-art transportation system to accommodate 390 million people by 2045, with much of this growth in the South and West?
4. **Income:** Transportation ranks second to housing in consumption of household income. Forty-five percent of Americans lack access to quality transit. The Center for Neighborhood Technology (CNT) notes that annual household transportation costs in the San Francisco Bay Area range from less than \$7,460 (high transit access) to more than \$17,400 (limited or no transit access).
5. **Safety:** Roadway crashes resulted in 32,719 fatalities in 2013 - the "leading cause of death" for young (under 35) Americans. According to the Insurance Institute for Highway Safety (IIHS): "If all vehicles had forward collision and lane departure

warnings, blind spot assist, and adaptive headlights, about 1 in 3 fatal crashes...could be prevented."

Check out both publications at www.dot.gov/beyondtraffic to get USDOT's perspective on: (1) "How will we move?", (2) "How will we move things?", (3) "How will we move better?", (4) "How will we adapt?", and (5) "How will we align decisions and dollars?". Educate the public on how transportation planners and engineers implement innovative transportation solutions. Inspire action from decision makers by explaining how state-of-the-art transportation infrastructure improves the lives of citizens.

How would HSR Impact the Central Valley Economy?

David M. Schwegel, PE

Oliveira Advisory Services and Parsons Brinckerhoff prepared the report "California High-Speed Rail and the Central Valley Economy" (January 2015) – a major emphasis at the February 2015 California High Speed Rail Authority (CHSRA) Board Meeting in Sacramento. The five-step study approach was as follows: (1) "Analyze Economic & Demographic Data", (2) "Survey Economic Development Plans", (3) "Conduct Roundtable Meetings", (4) "Conduct One-on-One Interviews", and (5) "Prepare Study Report & Summary". The Central Valley includes Fresno, Kern, Kings, Madera, Merced, Tulare, Stanislaus, and San Joaquin Counties. Findings fall into five themes:

1. **Connectivity:** The Central Valley region - long regarded as an "island" separated by geographic (distance) and topographic (mountains) barriers, slowing economic recovery - would be connected to the Bay Area and Los Angeles Basin economic centers like never before.
2. **Knowledge:** The "digital divide" in this region, where only 16% hold college degrees, would be bridged with HSR right-of-way used for fiber optic cables, bringing high-speed internet access to a greater portion of the population.
3. **Tourism:** HSR is an integral part of a "statewide integrated system of mass transit and station area development" (CHSRA Board Chairman Dan Richard) with stations serving as "visitor hubs", stimulating increased vacation rail and bus service to Yosemite, Sequoia, and Kings Canyon National Parks.
4. **Prosperity:** With boosted certainty (June 2014 Cap and Trade revenue, January 2015 Groundbreaking), investors would see HSR stations as a "catalyst for economic revitalization and development." Keep an eye on San Francisco's Transbay Center and the Anaheim Regional Transportation Intermodal Center (ARTIC) station area development for potential in Fresno, Bakersfield, Stockton, Modesto, and Merced.
5. **Technology:** Business development organizations are using HSR in their "marketing pitch" to attract high-tech industries to this region with less expensive land.

Transportation professionals are encouraged to collaborate at events such as the: (1) CHSRA Board Meeting, April 14th, San Francisco (www.hsr.ca.gov); (2) US High Speed Rail Association Conference, April 21-23, Washington DC (www.ushsr.com); and (3) California Transportation Choices Summit, Sacramento, April 27 (www.transformca.org). Then encourage candid discussions among the public on how transportation systems impact vital issues such as economic stimulation.

If you would like to submit a technical article for the next issue of the newsletter, please contact David Schwegel (davidmschwegel1@gmail.com) or Sowmya Chandrasekhar (sxc@iteris.com), for details.

Career Opportunities

Traffic Engineer II:

The City of Glendale, CA has an opening for a Traffic Engineer II position to conduct and supervise the preparation of various analyses and designs on traffic operations, traffic safety, signal timing optimization and network modeling. To review job bulletin and to apply, visit <http://agency.governmentjobs.com/glendaleca/default.cfm>

Opportunities for Newsletter Advertising and Sponsorship

The monthly newsletter is a perfect venue for advertising your products and services, as it is circulated nine (9) times a year to approximately 700 ITE recipients all over Southern California. Advertisements are priced reasonably for the benefit of our members.

Please contact Melissa Countryman at 310-544-5256 or melissac@rpv.com to submit an ad and/or sponsor a monthly newsletter or luncheon.

Message from the Student Liaisons Chairs

We are looking for professionals who are interested in presenting to our student chapters. These presentations could include technical topics as well as general tips about careers and the professional world.

For more information, please contact Hassan Ahmed (hahmed@gibsontrans.com) or Josh McNeill (jmcneill@mbakerintl.com).



SOUTHERN CALIFORNIA
SECTION

**2014-2015
CALENDAR**



| | | |
|---|---|--|
| <p>AUGUST 2014 ITE ANNUAL STEAK FRY BARBEQUE Wed. Aug 20, 2014</p> <p>MONTEREY HILL, Monterey Park Dinner – 5:30pm</p> | <p>SEPTEMBER REGULAR ITE MEETING Sept. 17, 2014</p> <p>MONTEREY HILL, Monterey Park Lunch – 11:30am</p> | <p>OCTOBER REGULAR ITE MEETING Wed. Oct. 15, 2014</p> <p>Knott's Berry Farm Resort Hotel Buena Park Lunch – 11:30am</p> |
| <p>NOVEMBER JOINT MEETING RIVERSIDE- SAN BERNARDINO SECTION Wed. Nov. 19, 2014</p> <p>The Restaurant at Kellogg Ranch Cal Poly Pomona Lunch – 11:30am</p> | <p>DECEMBER HOLIDAY MIXER Wed. Dec. 10, 2014</p> <p>Los Coyotes, Buena Park 5:30 PM</p> <p>HAPPY HOLIDAYS</p> |  |
| <p>JANUARY 2013 JOINT MEETING CITY TRAFFIC ENGINEERS Wed. Jan. 14, 2015</p> <p>MONTEREY HILL, Monterey Park Lunch – 11:30am</p> | <p>FEBRUARY JOINT MEETING CENTRAL COAST SECTION Tues. Feb. 17, 2015</p> <p>City MSC Thousand Oaks Lunch – 11:30am</p> | <p>MARCH JOINT MEETING SAN DIEGO SECTION Fri. March 20, 2015</p> <p>El Adobe Restaurant San Juan Capistrano 10:00am – 2:00pm Workshop, 12:00 lunch</p> |
| <p>APRIL REGULAR ITE MEETING Wed. April 15, 2015</p> <p>MONTEREY HILL, Monterey Park Lunch – 11:30am</p> | <p>MAY JOINT WITH OCTEC Golf Tournament Fri. May 8, 2015 Student Chapter Presentations Wed. May 20, 2015 Knott's Hotel Buena Park Dinner – 5:00pm</p> | <p>JUNE MINI-WORKSHOP ANNUAL BUSINESS AND JOINT MEETING WITH ITS SOCAL Wed. June 17, 2015</p> <p>MONTEREY HILL, Monterey Park 8:30am – 2:00pm Workshop, 12:00 lunch</p> |

NOTES: Schedule was last updated February 2015. Some information is subject to change.

CALCULATING



iPeMS[®] lite

Easily use third party data to measure and manage your arterial transportation network. iPeMS lite software provides:

- Identification of traffic trends and hot spots
- Comparison of current and historical conditions
- Before and after studies for investment evaluation
- Hosted service with easy to use web-based interface

Learn more about iPeMS lite at iteris.com

Innovation for better mobility



INSTITUTE OF TRANSPORTATION
ENGINEERS



P R E S E N T S

Our April Meeting
at

Monterey Hill Restaurant
3700 West Ramona Boulevard
Monterey Park, CA 91754

WEDNESDAY
4.15.2015
11:30 AM

DEVELOPING YELLOW TIME INTERVALS FOR LEFT-TURN

MOVEMENTS FOR THE CITY OF SANTA CLARITA

ANDREW YI, P.E.

CITY TRAFFIC ENGINEER, CITY OF SANTA CLARITA

ADAM DANKBERG, P.E.

ASSOCIATE, KIMLEY-HORN AND ASSOCIATES

EARLY REGISTRATION ENDS AT 4 PM ON THURSDAY 4.9.15

Please register online <https://www.eventbrite.com/e/ite-so-cal-luncheon-tickets-16425063808>

For questions please contact:

Jay Dinkins, P.E.

Secretary

ITE Southern California Section

jay.dinkins@smgov.net

Early Registration \$30 | Registration at the door \$35 | Students \$10

OCTEC/ITE Golf Tournament

The Annual OCTEC/SoCal ITE Golf Tournament will be at Green River Golf Club in Corona a little more than a month from now on Friday May 8, 2015.

SPONSORSHIPS ARE NEEDED TO HELP MAKE THIS EVENT SUCCESSFUL!!!

Hole Sponsorships/Donations - \$300 each (5 NEEDED to fill the field)

Grab n Go Breakfast Sponsorships - \$250 each (4 NEEDED to fill the field)

Hole Sponsorships - \$300 each (12 more appreciated to double the sponsored field for the first time)

There are also several other sponsorship opportunities identified on the Eventbrite page [\[CLICK HERE\]](#)

Please contact Ron Keith (rkeith@octa.net or 714-560-5990) or any Board member should you have any questions.

Spring Social Mixer

Dave and Buster's (Orange)

April 9, 2015

5:30 PM to 9:00 PM

\$7.00 Pre-sale <--- ORDER NOW TO SAVE!!!

\$10.00 At-the-door

RSVP at: <https://octec2015springmixer.eventbrite.com>

- * Price includes entry, 1 drink ticket, appetizers, 1 raffle ticket and free pool and shuffle board.
- * Bring a potential new member and receive 2 additional raffle tickets.
- * Raffle tickets will also be sold for \$1 each at the door.

Transportation System Optimization Workshop

Date: May 8, 2015

Location: GER 206

Daniel J. Epstein Department of Industrial and Engineering
University of Southern California

Sponsors: Epstein Institute and METTRANS

Click [here](#) to RSVP or email Janet Kleinman (janetkle@usc.edu)

[Registration Deadline is April 30, 2015](#)

Wednesday, May 6, 2015

Student Presentation & Alumni Networking Event

U.C. Irvine's Student Chapter of ITE is searching for sponsors for our annual student presentation and alumni networking event. This event is an opportunity for students to present the results of their year long projects and meet UCI CEE alumni. This year's projects focus on multi-modalism, specifically bicycling and bicycle signal detection technologies. Your \$500 donation will go towards ensuring that all U.C. Irvine Student Chapter members have the opportunity to attend this wonderful event.

Date: Wednesday, May 6, 2015

Time: Mixer: 5-6:30

Dinner & Presentations: 6:30-9

Location: U.C. Irvine's Student Center– Emerald Bay Room

Please make donations out to ITE at UCI by Friday, April 10, 2015.

Questions? Contact Ramin Massoumi at rmm@iteris.com



Institute of Transportation Engineers
University of California, Irvine Student Chapter

